

Staicele 1 daļa dimmēts režīms

Skolas iela
Planču iela
Avotu iela
Dārza iela
Jūras iela
Kluba iela
Ūdens iela
Kalēju iela

Partner for Contact:
Order No.:
Company:
Customer No.:

Date: 13.04.2015
Operator:

Operator
Telephone
Fax
e-Mail

Table of contents

Staicele 1 daļa dimmēts režīms	
Project Cover	1
Table of contents	2
SIA Elnitor RoadSpark SLIM 80W	
Luminaire Data Sheet	5
RoadSpark SLIM 60W	
Luminaire Data Sheet	6
Skolas iela (pirmais posms)	
Planning data	7
Luminaire parts list	8
False Colour Rendering	9
Valuation Fields	
Valuation Field Roadway 1	
Observer	
Observer 1	
Isolines (L)	10
Observer 2	
Isolines (L)	11
Skolas iela (otrais posms)	
Planning data	12
Luminaire parts list	13
False Colour Rendering	14
Valuation Fields	
Valuation Field Roadway 1	
Observer	
Observer 1	
Isolines (L)	15
Observer 2	
Isolines (L)	16
Planču iela	
Planning data	17
Luminaire parts list	18
False Colour Rendering	19
Valuation Fields	
Valuation Field Roadway 1	
Observer	
Observer 1	
Isolines (L)	20
Observer 2	
Isolines (L)	21
Avotu iela	
Planning data	22
Luminaire parts list	23
False Colour Rendering	24
Valuation Fields	
Valuation Field Roadway 1	
Observer	
Observer 1	
Isolines (L)	25
Observer 2	
Isolines (L)	26
Dārza iela	
Planning data	27
Luminaire parts list	28

Operator
Telephone
Fax
e-Mail

Table of contents

False Colour Rendering	29
Valuation Fields	
Valuation Field Roadway 1	
Observer	
Observer 1	
Isolines (L)	30
Observer 2	
Isolines (L)	31
Jūras iela	
Planning data	32
Luminaire parts list	33
False Colour Rendering	34
Valuation Fields	
Valuation Field Roadway 1	
Observer	
Observer 1	
Isolines (L)	35
Observer 2	
Isolines (L)	36
Kluba iela	
Planning data	37
Luminaire parts list	38
False Colour Rendering	39
Valuation Fields	
Valuation Field Roadway 1	
Observer	
Observer 1	
Isolines (L)	40
Observer 2	
Isolines (L)	41
Ūdens iela	
Planning data	42
Luminaire parts list	43
False Colour Rendering	44
Valuation Fields	
Valuation Field Roadway 1	
Observer	
Observer 1	
Isolines (L)	45
Observer 2	
Isolines (L)	46
Kalēju iela (pirmais posms)	
Planning data	47
Luminaire parts list	48
False Colour Rendering	49
Valuation Fields	
Valuation Field Roadway 1	
Observer	
Observer 1	
Isolines (L)	50
Observer 2	
Isolines (L)	51
Kalēju iela (otrais posms)	
Planning data	52

Operator
Telephone
Fax
e-Mail

Table of contents

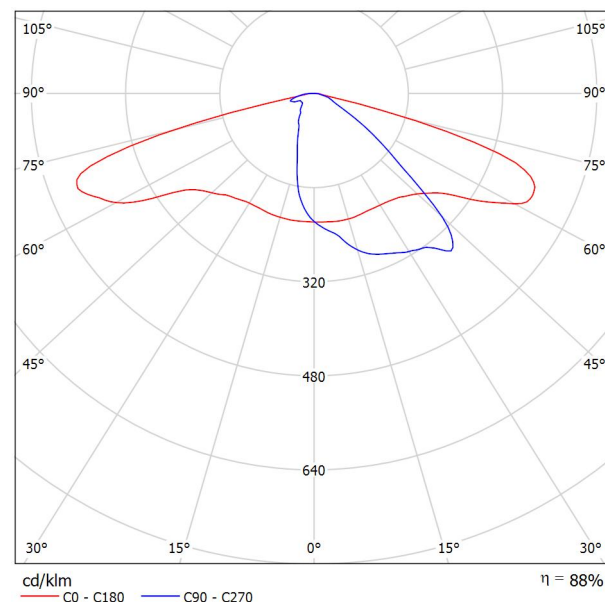
Luminaire parts list	53
False Colour Rendering	54
Valuation Fields	
Valuation Field Roadway 1	
Observer	
Observer 1	
Isolines (L)	55
Observer 2	
Isolines (L)	56

Operator
Telephone
Fax
e-Mail

SIA Elnitor RoadSpark SLIM 80W / Luminaire Data Sheet

Luminous emittance 1:

See our luminaire catalog for an image of the luminaire.



Luminaire classification according to CIE: 100
CIE flux code: 35 68 94 100 88

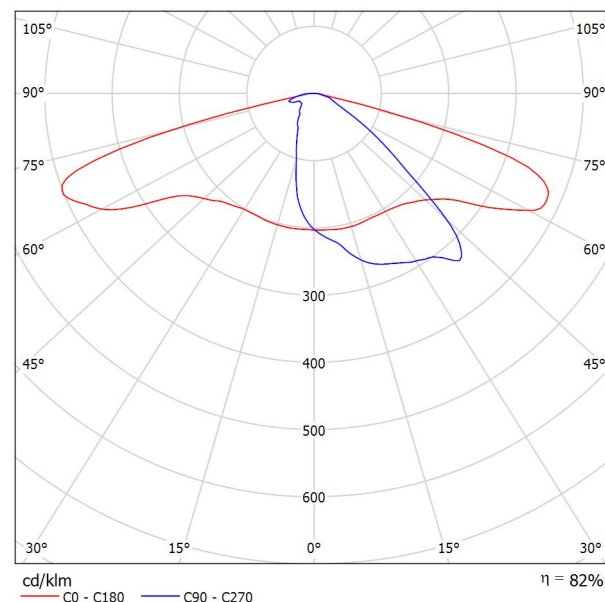
Due to missing symmetry properties, no UGR table can be displayed for this luminaire.

Operator
Telephone
Fax
e-Mail

RoadSpark SLIM 60W / Luminaire Data Sheet

Luminous emittance 1:

See our luminaire catalog for an image of the luminaire.



Luminaire classification according to CIE: 100
CIE flux code: 35 68 94 100 82

Due to missing symmetry properties, no UGR table can be displayed for this luminaire.

Operator
Telephone
Fax
e-Mail

Skolas iela (pirmais posms) / Planning data

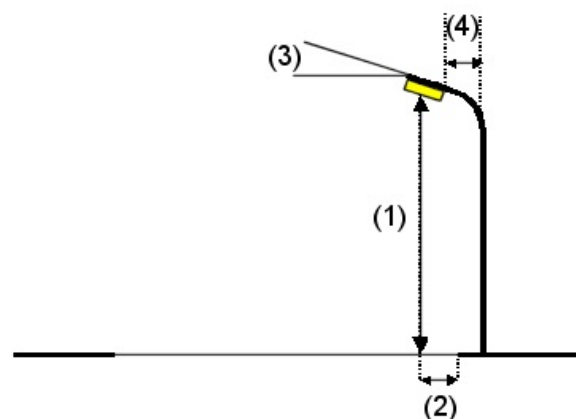
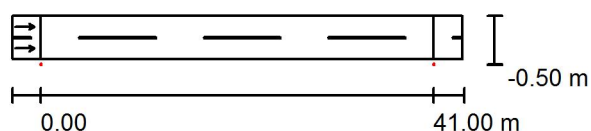
No P15 līdz Planču ielai

Street Profile

Roadway 1 (Width: 4.500 m, Number of lanes: 2, tarmac: R3, q0: 0.070)

Maintenance factor: 0.85

Luminaire Arrangements



Luminaire:	RoadSpark SLIM 60W
Luminous flux (Luminaire):	6072 lm
Luminous flux (Lamps):	7440 lm
Luminaire Wattage:	60.0 W
Arrangement:	Single row, bottom
Pole Distance:	41.000 m
Mounting Height (1):	8.000 m
Height:	8.000 m
Overhang (2):	-0.500 m
Boom Angle (3):	0.0 °
Boom Length (4):	1.500 m

Maximum luminous intensities

at 70°:	457 cd/klm
at 80°:	96 cd/klm
at 90°:	12 cd/klm

Any direction forming the specified angle from the downward vertical, with the luminaire installed for use.

No luminous intensities above 90°.

Arrangement complies with luminous intensity class G3.

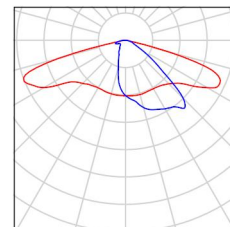
Arrangement complies with glare index class D.4.

Operator
Telephone
Fax
e-Mail

Skolas iela (pirmais posms) / Luminaire parts list

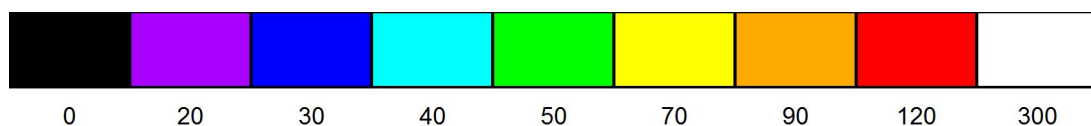
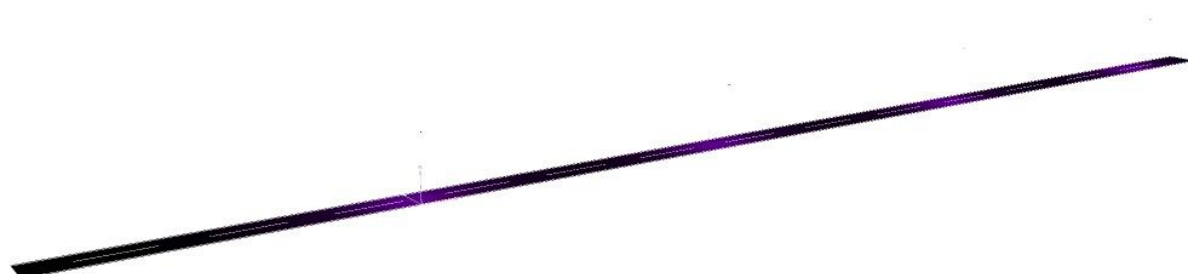
RoadSpark SLIM 60W
Article No.:
Luminous flux (Luminaire): 6072 lm
Luminous flux (Lamps): 7440 lm
Luminaire Wattage: 60.0 W
Luminaire classification according to CIE: 100
CIE flux code: 35 68 94 100 82
Fitting: 1 x Cree XP-G (Correction Factor 0.500).

See our luminaire
catalog for an image of
the luminaire.



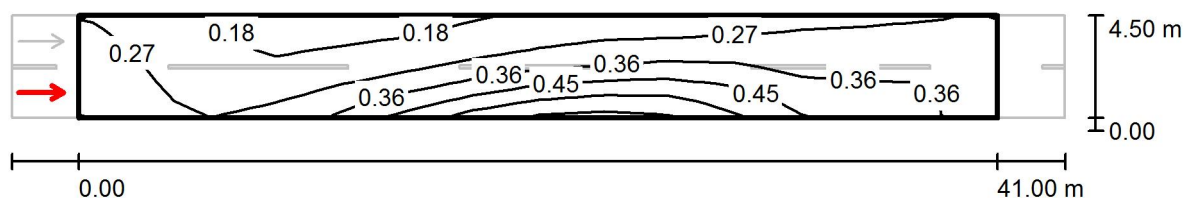
Operator
Telephone
Fax
e-Mail

Skolas iela (pirmais posms) / False Colour Rendering



Operator
Telephone
Fax
e-Mail

Skolas iela (pirmais posms) / Valuation Field Roadway 1 / Observer 1 / Isolines (L)



Values in Candela/m², Scale 1 : 337

Grid: 14 x 6 Points

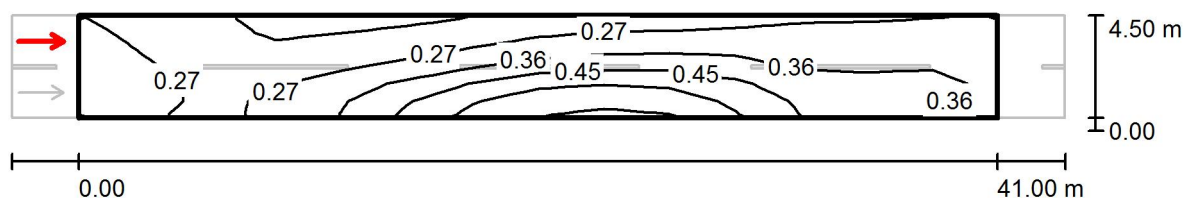
Observer Position: (-60.000 m, 1.125 m, 1.500 m)

tarmac: R3, q0: 0.070

	L_{av} [cd/m ²]	U0	UI	TI [%]
Calculated values:	0.31	0.47	0.43	12
Required values according to class ME6:	≥ 0.30	≥ 0.35	≥ 0.40	≤ 15
Fulfilled/Not fulfilled:	✓	✓	✓	✓

Operator
Telephone
Fax
e-Mail

Skolas iela (pirmais posms) / Valuation Field Roadway 1 / Observer 2 / Isolines (L)



Values in Candela/m², Scale 1 : 337

Grid: 14 x 6 Points

Observer Position: (-60.000 m, 3.375 m, 1.500 m)

tarmac: R3, q0: 0.070

	L_{av} [cd/m ²]	U0	UI	TI [%]
Calculated values:	0.34	0.49	0.55	9
Required values according to class ME6:	≥ 0.30	≥ 0.35	≥ 0.40	≤ 15
Fulfilled/Not fulfilled:	✓	✓	✓	✓

Operator
Telephone
Fax
e-Mail

Skolas iela (otrais posms) / Planning data

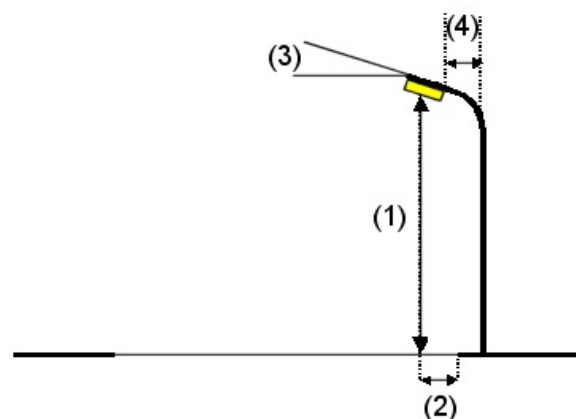
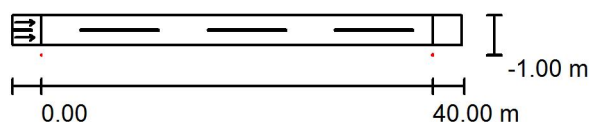
No Planču ielas līdz galam

Street Profile

Roadway 1 (Width: 3.000 m, Number of lanes: 2, tarmac: R3, q0: 0.070)

Maintenance factor: 0.85

Luminaire Arrangements



Luminaire:	RoadSpark SLIM 60W
Luminous flux (Luminaire):	6072 lm
Luminous flux (Lamps):	7440 lm
Luminaire Wattage:	60.0 W
Arrangement:	Single row, bottom
Pole Distance:	40.000 m
Mounting Height (1):	8.000 m
Height:	8.000 m
Overhang (2):	-1.000 m
Boom Angle (3):	0.0 °
Boom Length (4):	1.500 m

Maximum luminous intensities

at 70°:	457 cd/klm
at 80°:	96 cd/klm
at 90°:	12 cd/klm

Any direction forming the specified angle from the downward vertical, with the luminaire installed for use.

No luminous intensities above 90°.

Arrangement complies with luminous intensity class G3.

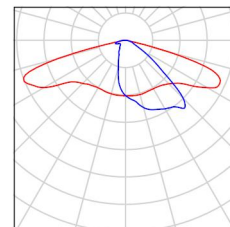
Arrangement complies with glare index class D.4.

Operator
Telephone
Fax
e-Mail

Skolas iela (otrais posms) / Luminaire parts list

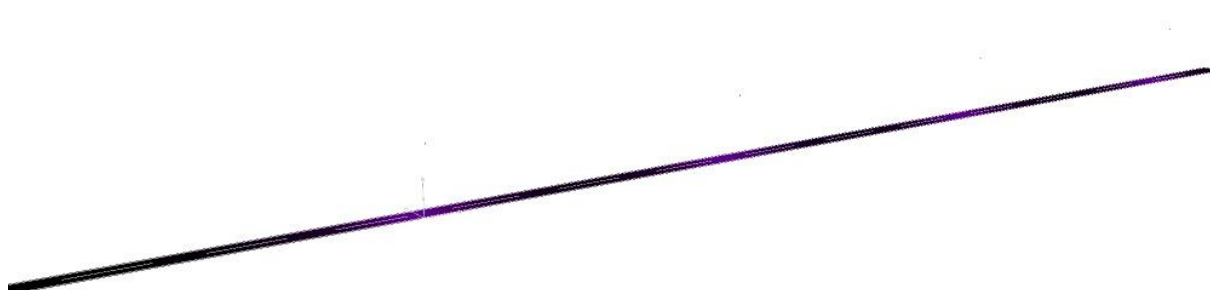
RoadSpark SLIM 60W
Article No.:
Luminous flux (Luminaire): 6072 lm
Luminous flux (Lamps): 7440 lm
Luminaire Wattage: 60.0 W
Luminaire classification according to CIE: 100
CIE flux code: 35 68 94 100 82
Fitting: 1 x Cree XP-G (Correction Factor 0.500).

See our luminaire
catalog for an image of
the luminaire.



Operator
Telephone
Fax
e-Mail

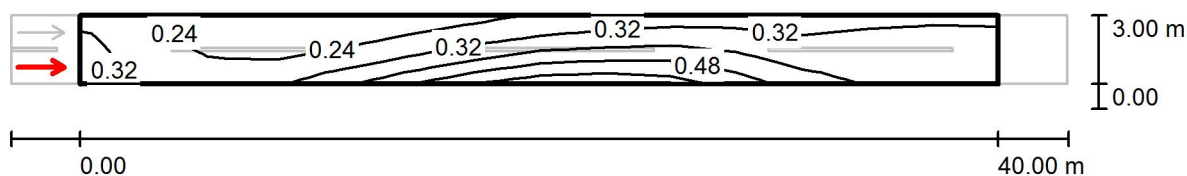
Skolas iela (otrais posms) / False Colour Rendering



0 20 30 40 50 70 90 120 300 lx

Operator
Telephone
Fax
e-Mail

Skolas iela (otrais posms) / Valuation Field Roadway 1 / Observer 1 / Isolines (L)



Values in Candela/m², Scale 1 : 329

Grid: 14 x 6 Points

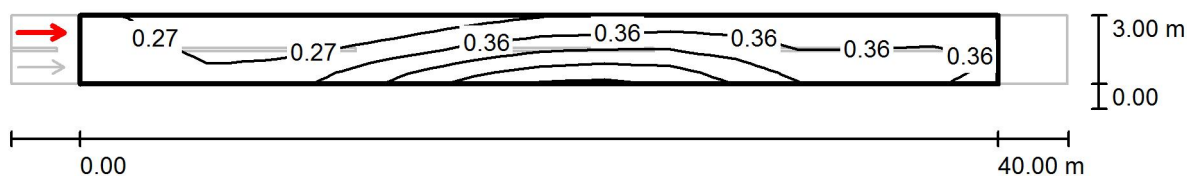
Observer Position: (-60.000 m, 0.750 m, 1.500 m)

tarmac: R3, q0: 0.070

	L_{av} [cd/m ²]	U0	UI	TI [%]
Calculated values:	0.34	0.53	0.47	12
Required values according to class ME6:	≥ 0.30	≥ 0.35	≥ 0.40	≤ 15
Fulfilled/Not fulfilled:	✓	✓	✓	✓

Operator
Telephone
Fax
e-Mail

Skolas iela (otrais posms) / Valuation Field Roadway 1 / Observer 2 / Isolines (L)



Values in Candela/m², Scale 1 : 329

Grid: 14 x 6 Points

Observer Position: (-60.000 m, 2.250 m, 1.500 m)

tarmac: R3, q0: 0.070

	L_{av} [cd/m ²]	U0	UI	TI [%]
Calculated values:	0.36	0.51	0.51	10
Required values according to class ME6:	≥ 0.30	≥ 0.35	≥ 0.40	≤ 15
Fulfilled/Not fulfilled:	✓	✓	✓	✓

Operator
Telephone
Fax
e-Mail

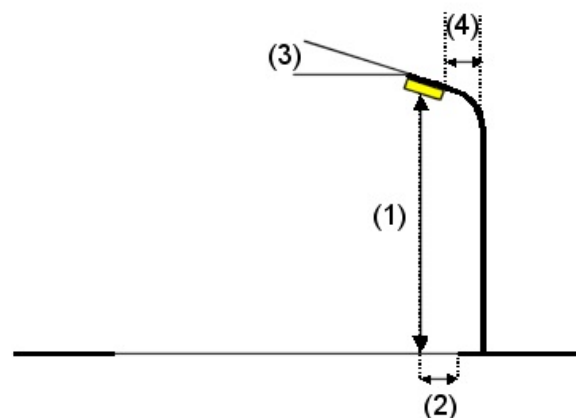
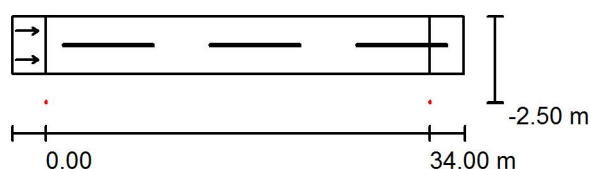
Planču iela / Planning data

Street Profile

Roadway 1 (Width: 5.000 m, Number of lanes: 2, tarmac: R3, q0: 0.070)

Maintenance factor: 0.85

Luminaire Arrangements



Luminaire:	RoadSpark SLIM 60W
Luminous flux (Luminaire):	6072 lm
Luminous flux (Lamps):	7440 lm
Luminaire Wattage:	60.0 W
Arrangement:	Single row, bottom
Pole Distance:	34.000 m
Mounting Height (1):	8.500 m
Height:	8.500 m
Overhang (2):	-2.500 m
Boom Angle (3):	5.0 °
Boom Length (4):	1.500 m

Maximum luminous intensities

at 70°:	465 cd/klm
at 80°:	175 cd/klm
at 90°:	18 cd/klm

Any direction forming the specified angle from the downward vertical, with the luminaire installed for use.

No luminous intensities above 95°.

Arrangement complies with luminous intensity class G1.

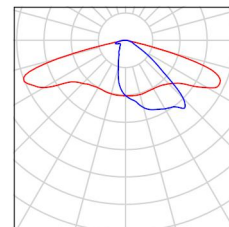
Arrangement complies with glare index class D.4.

Operator
Telephone
Fax
e-Mail

Planču iela / Luminaire parts list

RoadSpark SLIM 60W
Article No.:
Luminous flux (Luminaire): 6072 lm
Luminous flux (Lamps): 7440 lm
Luminaire Wattage: 60.0 W
Luminaire classification according to CIE: 100
CIE flux code: 35 68 94 100 82
Fitting: 1 x Cree XP-G (Correction Factor 0.600).

See our luminaire
catalog for an image of
the luminaire.



Operator
Telephone
Fax
e-Mail

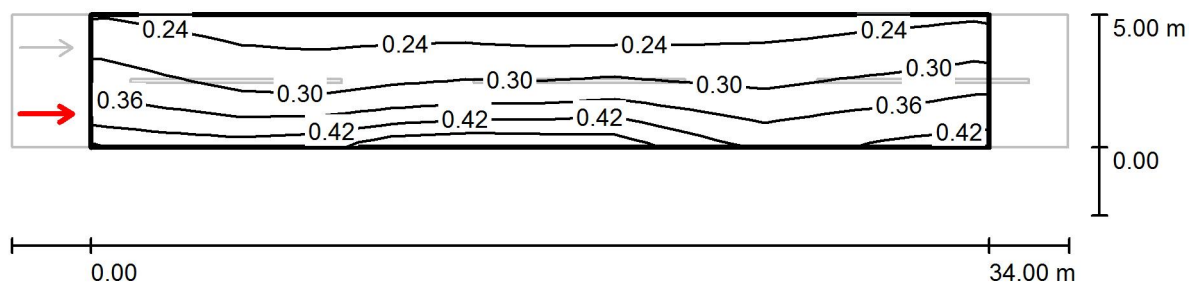
Planču iela / False Colour Rendering



lx

Operator
Telephone
Fax
e-Mail

Planču iela / Valuation Field Roadway 1 / Observer 1 / Isolines (L)



Values in Candela/m², Scale 1 : 286

Grid: 12 x 6 Points

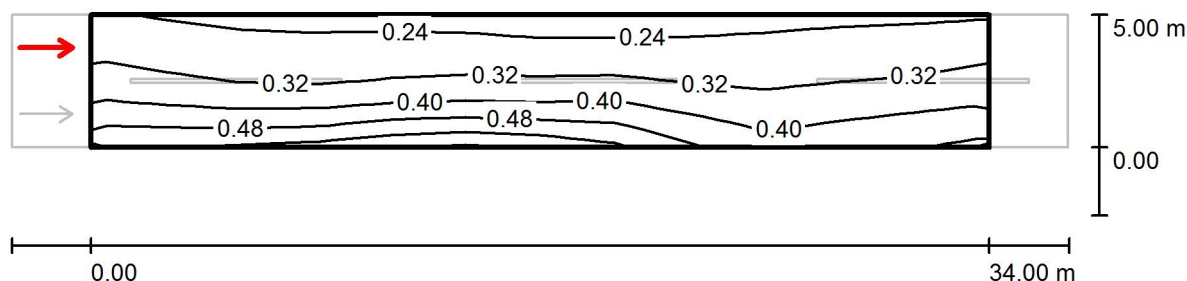
Observer Position: (-60.000 m, 1.250 m, 1.500 m)

tarmac: R3, q0: 0.070

	L_{av} [cd/m²]	U0	UI	TI [%]
Calculated values:	0.31	0.66	0.80	11
Required values according to class ME6:	≥ 0.30	≥ 0.35	≥ 0.40	≤ 15
Fulfilled/Not fulfilled:	✓	✓	✓	✓

Operator
Telephone
Fax
e-Mail

Planču iela / Valuation Field Roadway 1 / Observer 2 / Isolines (L)



Values in Candela/m², Scale 1 : 286

Grid: 12 x 6 Points

Observer Position: (-60.000 m, 3.750 m, 1.500 m)

tarmac: R3, q0: 0.070

	L_{av} [cd/m ²]	U0	UI	TI [%]
Calculated values:	0.35	0.63	0.87	8
Required values according to class ME6:	≥ 0.30	≥ 0.35	≥ 0.40	≤ 15
Fulfilled/Not fulfilled:	✓	✓	✓	✓

Operator
Telephone
Fax
e-Mail

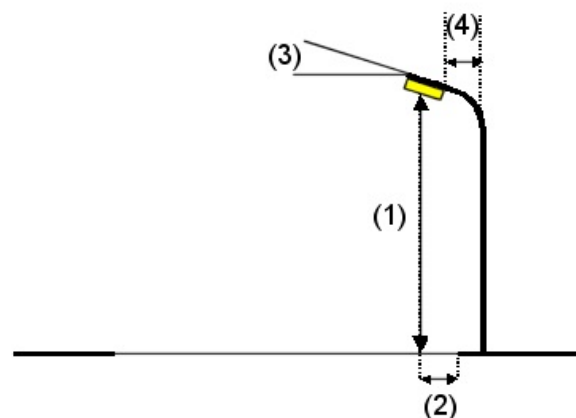
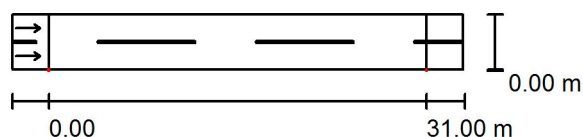
Avotu iela / Planning data

Street Profile

Roadway 1 (Width: 4.500 m, Number of lanes: 2, tarmac: R3, q0: 0.070)

Maintenance factor: 0.85

Luminaire Arrangements



Luminaire:	RoadSpark SLIM 60W
Luminous flux (Luminaire):	6072 lm
Luminous flux (Lamps):	7440 lm
Luminaire Wattage:	60.0 W
Arrangement:	Single row, bottom
Pole Distance:	31.000 m
Mounting Height (1):	8.000 m
Height:	8.000 m
Overhang (2):	0.000 m
Boom Angle (3):	0.0 °
Boom Length (4):	1.500 m

Maximum luminous intensities

at 70°:	457 cd/klm
at 80°:	96 cd/klm
at 90°:	12 cd/klm

Any direction forming the specified angle from the downward vertical, with the luminaire installed for use.

No luminous intensities above 90°.

Arrangement complies with luminous intensity class G3.

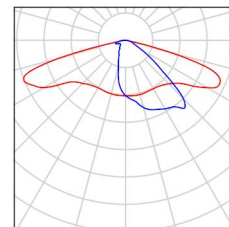
Arrangement complies with glare index class D.4.

Operator
Telephone
Fax
e-Mail

Avotu iela / Luminaire parts list

RoadSpark SLIM 60W
Article No.:
Luminous flux (Luminaire): 6072 lm
Luminous flux (Lamps): 7440 lm
Luminaire Wattage: 60.0 W
Luminaire classification according to CIE: 100
CIE flux code: 35 68 94 100 82
Fitting: 1 x Cree XP-G (Correction Factor 0.500).

See our luminaire
catalog for an image of
the luminaire.



Operator
Telephone
Fax
e-Mail

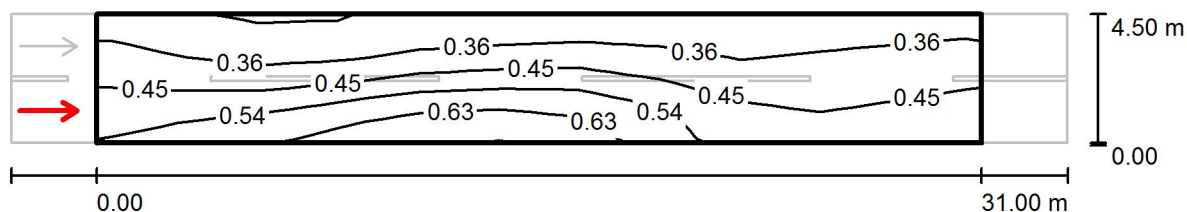
Avotu iela / False Colour Rendering



0 20 30 40 50 70 90 120 300 lx

Operator
Telephone
Fax
e-Mail

Avotu iela / Valuation Field Roadway 1 / Observer 1 / Isolines (L)



Values in Candela/m², Scale 1 : 265

Grid: 11 x 6 Points

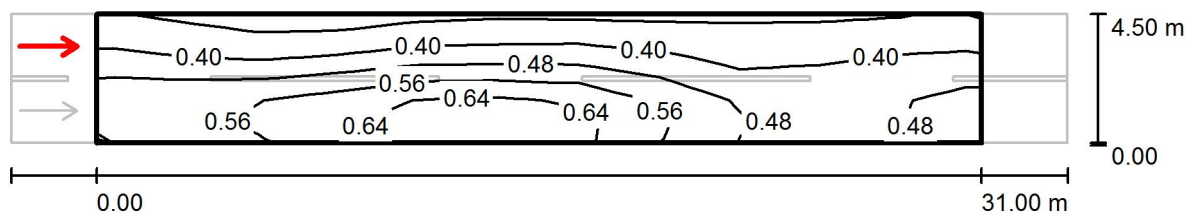
Observer Position: (-60.000 m, 1.125 m, 1.500 m)

tarmac: R3, q0: 0.070

	L_{av} [cd/m ²]	U0	UI	TI [%]
Calculated values:	0.44	0.59	0.69	10
Required values according to class ME6:	≥ 0.30	≥ 0.35	≥ 0.40	≤ 15
Fulfilled/Not fulfilled:	✓	✓	✓	✓

Operator
Telephone
Fax
e-Mail

Avotu iela / Valuation Field Roadway 1 / Observer 2 / Isolines (L)



Values in Candela/m², Scale 1 : 265

Grid: 11 x 6 Points

Observer Position: (-60.000 m, 3.375 m, 1.500 m)

tarmac: R3, q0: 0.070

	L_{av} [cd/m ²]	U0	UI	TI [%]
Calculated values:	0.47	0.62	0.83	8
Required values according to class ME6:	≥ 0.30	≥ 0.35	≥ 0.40	≤ 15
Fulfilled/Not fulfilled:	✓	✓	✓	✓

Operator
Telephone
Fax
e-Mail

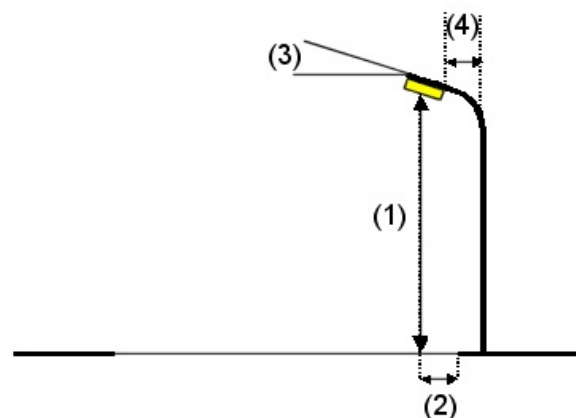
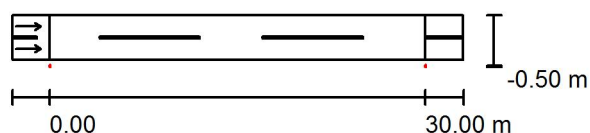
Dārza iela / Planning data

Street Profile

Roadway 1 (Width: 3.500 m, Number of lanes: 2, tarmac: R3, q0: 0.070)

Maintenance factor: 0.85

Luminaire Arrangements



Luminaire:	RoadSpark SLIM 60W
Luminous flux (Luminaire):	6072 lm
Luminous flux (Lamps):	7440 lm
Luminaire Wattage:	60.0 W
Arrangement:	Single row, bottom
Pole Distance:	30.000 m
Mounting Height (1):	8.000 m
Height:	8.000 m
Overhang (2):	-0.500 m
Boom Angle (3):	0.0 °
Boom Length (4):	1.500 m

Maximum luminous intensities

at 70°:	457 cd/klm
at 80°:	96 cd/klm
at 90°:	12 cd/klm

Any direction forming the specified angle from the downward vertical, with the luminaire installed for use.

No luminous intensities above 90°.

Arrangement complies with luminous intensity class G3.

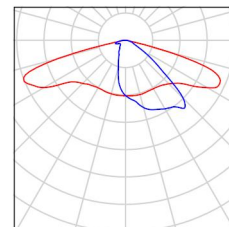
Arrangement complies with glare index class D.4.

Operator
Telephone
Fax
e-Mail

Dārza iela / Luminaire parts list

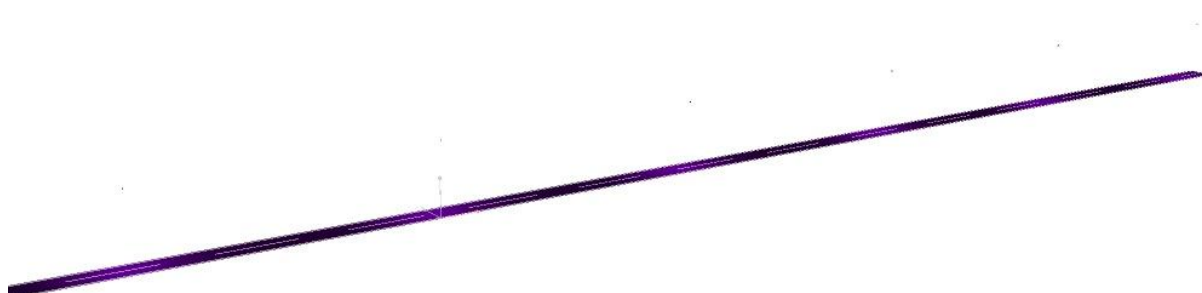
RoadSpark SLIM 60W
Article No.:
Luminous flux (Luminaire): 6072 lm
Luminous flux (Lamps): 7440 lm
Luminaire Wattage: 60.0 W
Luminaire classification according to CIE: 100
CIE flux code: 35 68 94 100 82
Fitting: 1 x Cree XP-G (Correction Factor 0.500).

See our luminaire
catalog for an image of
the luminaire.



Operator
Telephone
Fax
e-Mail

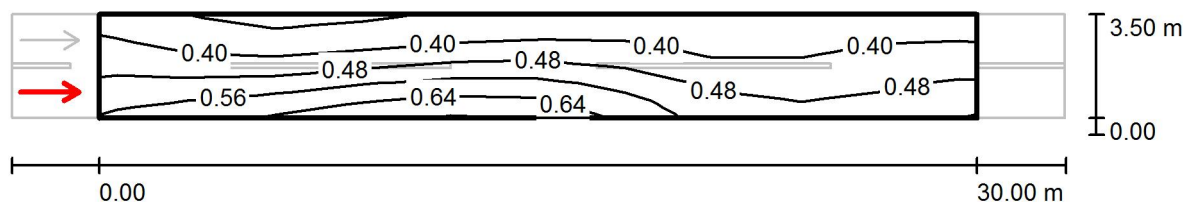
Dārza iela / False Colour Rendering



0 20 30 40 50 70 90 120 300 lx

Operator
Telephone
Fax
e-Mail

Dārza iela / Valuation Field Roadway 1 / Observer 1 / Isolines (L)



Values in Candela/m², Scale 1 : 258

Grid: 10 x 6 Points

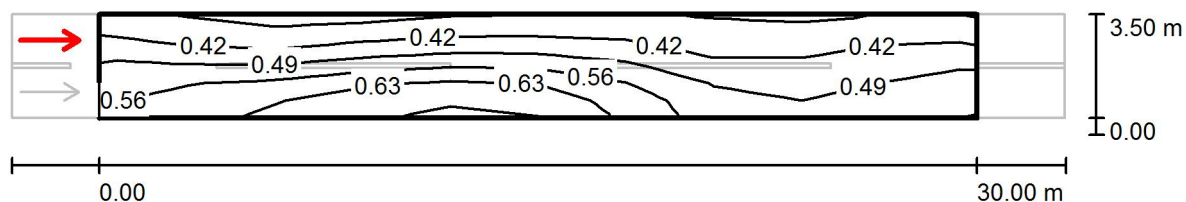
Observer Position: (-60.000 m, 0.875 m, 1.500 m)

tarmac: R3, q0: 0.070

	L_{av} [cd/m ²]	U0	UI	TI [%]
Calculated values:	0.46	0.65	0.74	9
Required values according to class ME6:	≥ 0.30	≥ 0.35	≥ 0.40	≤ 15
Fulfilled/Not fulfilled:	✓	✓	✓	✓

Operator
Telephone
Fax
e-Mail

Dārza iela / Valuation Field Roadway 1 / Observer 2 / Isolines (L)



Values in Candela/m², Scale 1 : 258

Grid: 10 x 6 Points

Observer Position: (-60.000 m, 2.625 m, 1.500 m)

tarmac: R3, q0: 0.070

	L_{av} [cd/m ²]	U0	UI	TI [%]
Calculated values:	0.49	0.68	0.83	8
Required values according to class ME6:	≥ 0.30	≥ 0.35	≥ 0.40	≤ 15
Fulfilled/Not fulfilled:	✓	✓	✓	✓

Operator
Telephone
Fax
e-Mail

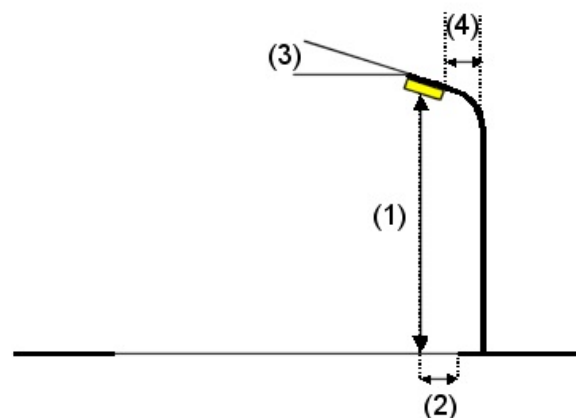
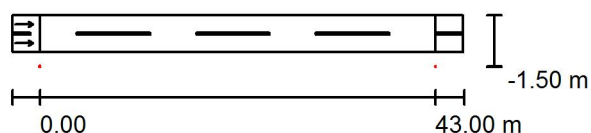
Jūras iela / Planning data

Street Profile

Roadway 1 (Width: 4.000 m, Number of lanes: 2, tarmac: R3, q0: 0.070)

Maintenance factor: 0.85

Luminaire Arrangements



Luminaire:	RoadSpark SLIM 60W
Luminous flux (Luminaire):	6072 lm
Luminous flux (Lamps):	7440 lm
Luminaire Wattage:	60.0 W
Arrangement:	Single row, bottom
Pole Distance:	43.000 m
Mounting Height (1):	8.000 m
Height:	8.000 m
Overhang (2):	-1.500 m
Boom Angle (3):	0.0 °
Boom Length (4):	1.500 m

Maximum luminous intensities

at 70°:	457 cd/klm
at 80°:	96 cd/klm
at 90°:	12 cd/klm

Any direction forming the specified angle from the downward vertical, with the luminaire installed for use.

No luminous intensities above 90°.

Arrangement complies with luminous intensity class G3.

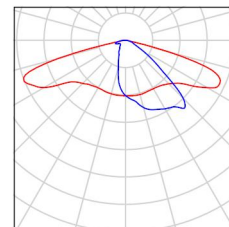
Arrangement complies with glare index class D.4.

Operator
Telephone
Fax
e-Mail

Jūras iela / Luminaire parts list

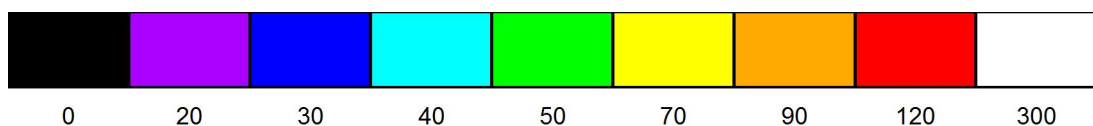
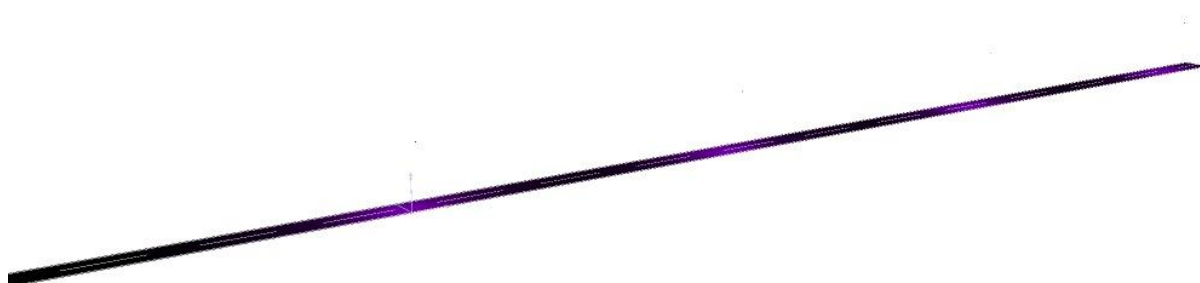
RoadSpark SLIM 60W
Article No.:
Luminous flux (Luminaire): 6072 lm
Luminous flux (Lamps): 7440 lm
Luminaire Wattage: 60.0 W
Luminaire classification according to CIE: 100
CIE flux code: 35 68 94 100 82
Fitting: 1 x Cree XP-G (Correction Factor 0.600).

See our luminaire
catalog for an image of
the luminaire.



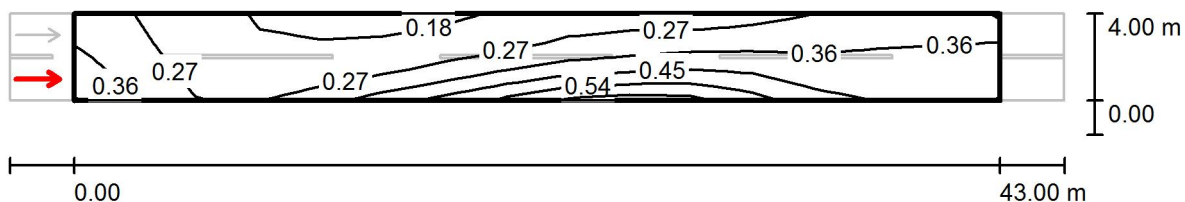
Operator
Telephone
Fax
e-Mail

Jūras iela / False Colour Rendering



Operator
Telephone
Fax
e-Mail

Jūras iela / Valuation Field Roadway 1 / Observer 1 / Isolines (L)



Values in Candela/m², Scale 1 : 351

Grid: 15 x 6 Points

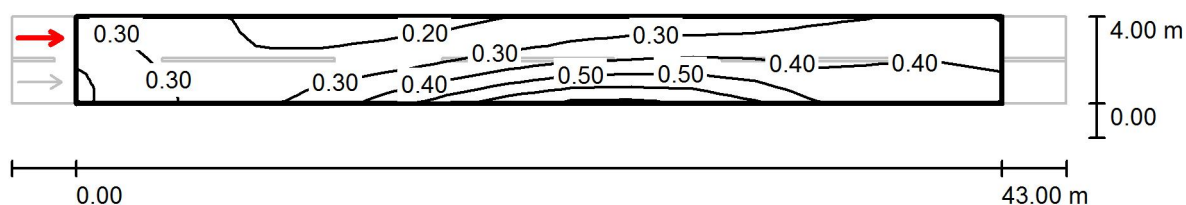
Observer Position: (-60.000 m, 1.000 m, 1.500 m)

tarmac: R3, q0: 0.070

	L_{av} [cd/m ²]	U0	UI	TI [%]
Calculated values:	0.32	0.47	0.41	14
Required values according to class ME6:	≥ 0.30	≥ 0.35	≥ 0.40	≤ 15
Fulfilled/Not fulfilled:	✓	✓	✓	✓

Operator
Telephone
Fax
e-Mail

Jūras iela / Valuation Field Roadway 1 / Observer 2 / Isolines (L)



Values in Candela/m², Scale 1 : 351

Grid: 15 x 6 Points

Observer Position: (-60.000 m, 3.000 m, 1.500 m)

tarmac: R3, q0: 0.070

	L_{av} [cd/m ²]	U0	UI	TI [%]
Calculated values:	0.35	0.47	0.53	10
Required values according to class ME6:	≥ 0.30	≥ 0.35	≥ 0.40	≤ 15
Fulfilled/Not fulfilled:	✓	✓	✓	✓

Operator
Telephone
Fax
e-Mail

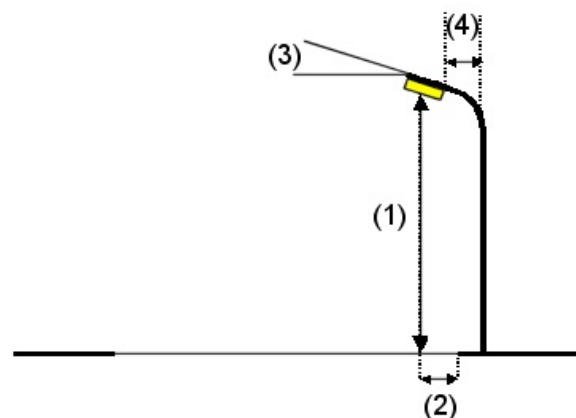
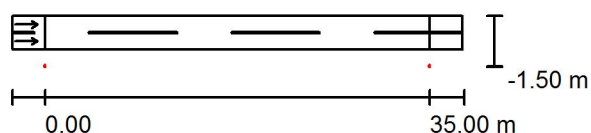
Kluba iela / Planning data

Street Profile

Roadway 1 (Width: 3.000 m, Number of lanes: 2, tarmac: R3, q0: 0.070)

Maintenance factor: 0.85

Luminaire Arrangements



Luminaire:	RoadSpark SLIM 60W
Luminous flux (Luminaire):	6072 lm
Luminous flux (Lamps):	7440 lm
Luminaire Wattage:	60.0 W
Arrangement:	Single row, bottom
Pole Distance:	35.000 m
Mounting Height (1):	8.000 m
Height:	8.000 m
Overhang (2):	-1.500 m
Boom Angle (3):	0.0 °
Boom Length (4):	1.500 m

Maximum luminous intensities

at 70°:	457 cd/klm
at 80°:	96 cd/klm
at 90°:	12 cd/klm

Any direction forming the specified angle from the downward vertical, with the luminaire installed for use.

No luminous intensities above 90°.

Arrangement complies with luminous intensity class G3.

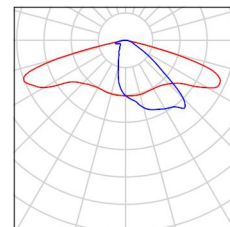
Arrangement complies with glare index class D.4.

Operator
Telephone
Fax
e-Mail

Kluba iela / Luminaire parts list

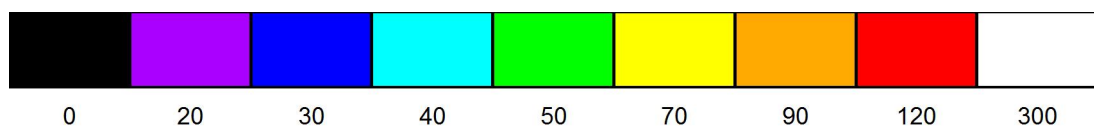
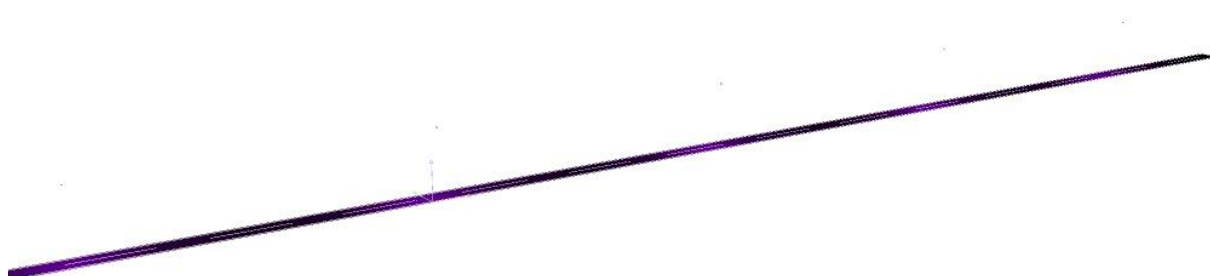
RoadSpark SLIM 60W
Article No.:
Luminous flux (Luminaire): 6072 lm
Luminous flux (Lamps): 7440 lm
Luminaire Wattage: 60.0 W
Luminaire classification according to CIE: 100
CIE flux code: 35 68 94 100 82
Fitting: 1 x Cree XP-G (Correction Factor 0.500).

See our luminaire
catalog for an image of
the luminaire.



Operator
Telephone
Fax
e-Mail

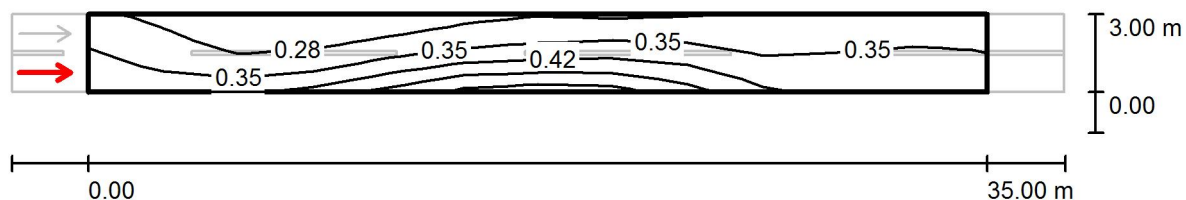
Kluba iela / False Colour Rendering



lx

Operator
Telephone
Fax
e-Mail

Kluba iela / Valuation Field Roadway 1 / Observer 1 / Isolines (L)



Values in Candela/m², Scale 1 : 294

Grid: 12 x 6 Points

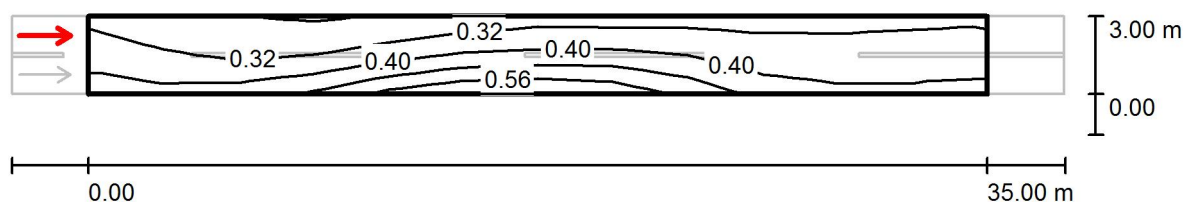
Observer Position: (-60.000 m, 0.750 m, 1.500 m)

tarmac: R3, q0: 0.070

	L_{av} [cd/m ²]	U0	UI	TI [%]
Calculated values:	0.35	0.61	0.64	11
Required values according to class ME6:	≥ 0.30	≥ 0.35	≥ 0.40	≤ 15
Fulfilled/Not fulfilled:	✓	✓	✓	✓

Operator
Telephone
Fax
e-Mail

Kluba iela / Valuation Field Roadway 1 / Observer 2 / Isolines (L)



Values in Candela/m², Scale 1 : 294

Grid: 12 x 6 Points

Observer Position: (-60.000 m, 2.250 m, 1.500 m)

tarmac: R3, q0: 0.070

	L_{av} [cd/m ²]	U0	UI	TI [%]
Calculated values:	0.38	0.62	0.73	9
Required values according to class ME6:	≥ 0.30	≥ 0.35	≥ 0.40	≤ 15
Fulfilled/Not fulfilled:	✓	✓	✓	✓

Operator
Telephone
Fax
e-Mail

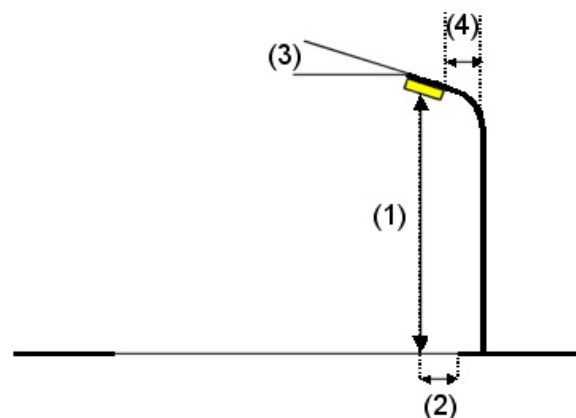
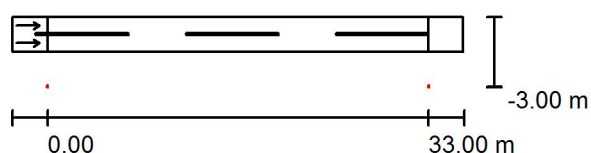
Ūdens iela / Planning data

Street Profile

Roadway 1 (Width: 3.000 m, Number of lanes: 2, tarmac: R3, q0: 0.070)

Maintenance factor: 0.85

Luminaire Arrangements



Luminaire:	RoadSpark SLIM 60W
Luminous flux (Luminaire):	6072 lm
Luminous flux (Lamps):	7440 lm
Luminaire Wattage:	60.0 W
Arrangement:	Single row, bottom
Pole Distance:	33.000 m
Mounting Height (1):	9.000 m
Height:	9.000 m
Overhang (2):	-3.000 m
Boom Angle (3):	5.0 °
Boom Length (4):	1.500 m

Maximum luminous intensities

at 70°:	465 cd/klm
at 80°:	175 cd/klm
at 90°:	18 cd/klm

Any direction forming the specified angle from the downward vertical, with the luminaire installed for use.

No luminous intensities above 95°.

Arrangement complies with luminous intensity class G1.

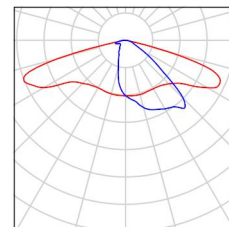
Arrangement complies with glare index class D.4.

Operator
Telephone
Fax
e-Mail

Ūdens iela / Luminaire parts list

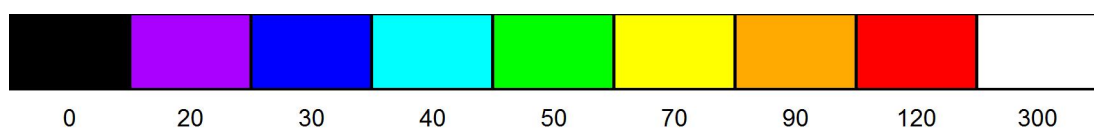
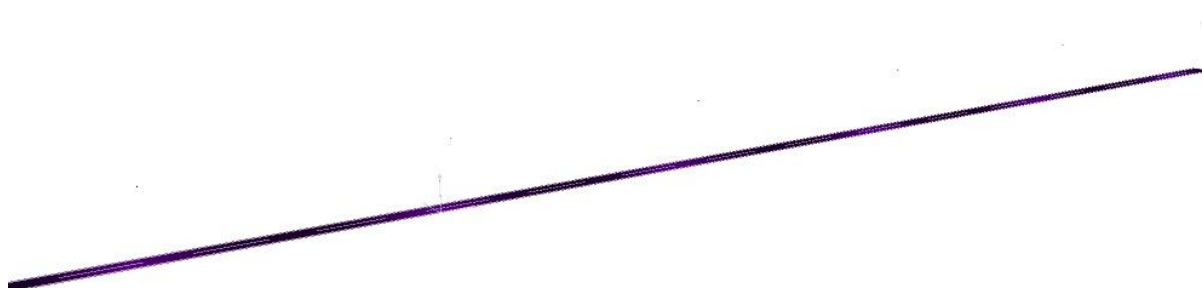
RoadSpark SLIM 60W
Article No.:
Luminous flux (Luminaire): 6072 lm
Luminous flux (Lamps): 7440 lm
Luminaire Wattage: 60.0 W
Luminaire classification according to CIE: 100
CIE flux code: 35 68 94 100 82
Fitting: 1 x Cree XP-G (Correction Factor 0.600).

See our luminaire
catalog for an image of
the luminaire.



Operator
Telephone
Fax
e-Mail

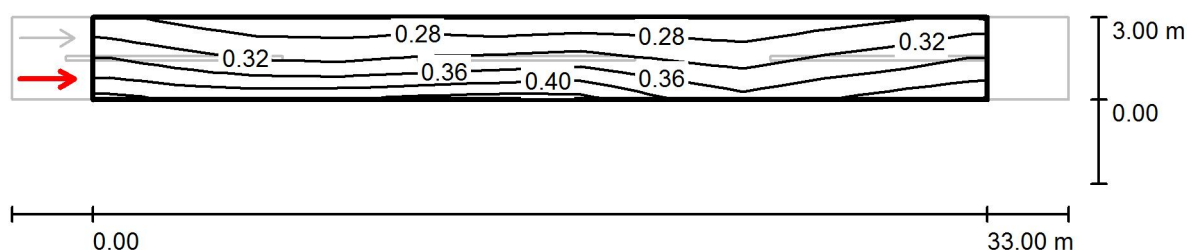
Ūdens iela / False Colour Rendering



lx

Operator
Telephone
Fax
e-Mail

Ūdens iela / Valuation Field Roadway 1 / Observer 1 / Isolines (L)



Values in Candela/m², Scale 1 : 279

Grid: 11 x 6 Points

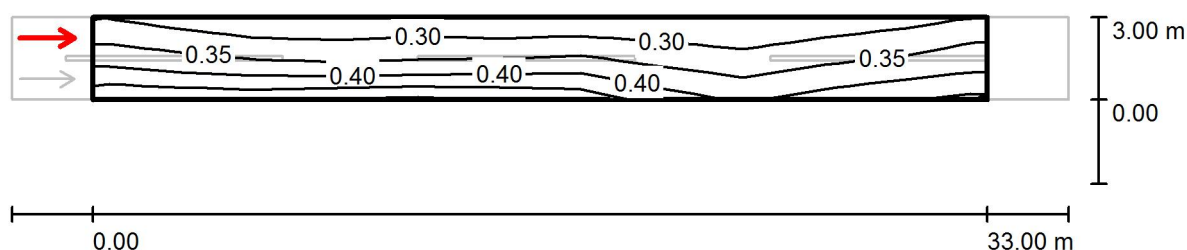
Observer Position: (-60.000 m, 0.750 m, 1.500 m)

tarmac: R3, q0: 0.070

	L_{av} [cd/m ²]	U0	UI	TI [%]
Calculated values:	0.33	0.74	0.81	10
Required values according to class ME6:	≥ 0.30	≥ 0.35	≥ 0.40	≤ 15
Fulfilled/Not fulfilled:	✓	✓	✓	✓

Operator
Telephone
Fax
e-Mail

Ūdens iela / Valuation Field Roadway 1 / Observer 2 / Isolines (L)



Values in Candela/m², Scale 1 : 279

Grid: 11 x 6 Points

Observer Position: (-60.000 m, 2.250 m, 1.500 m)

tarmac: R3, q0: 0.070

	L_{av} [cd/m ²]	U0	UI	TI [%]
Calculated values:	0.35	0.72	0.81	8
Required values according to class ME6:	≥ 0.30	≥ 0.35	≥ 0.40	≤ 15
Fulfilled/Not fulfilled:	✓	✓	✓	✓

Operator
Telephone
Fax
e-Mail

Kalēju iela (pirmais posms) / Planning data

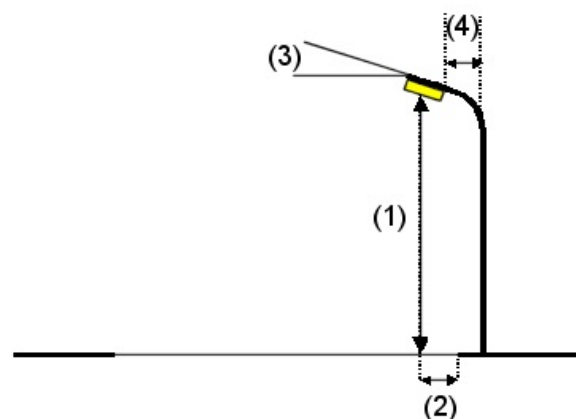
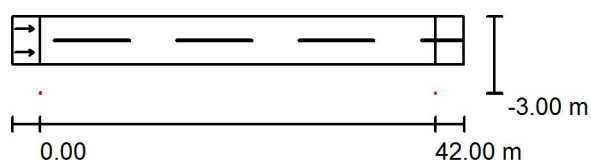
No Dzirnauv ielas līdz Cepļu ielai

Street Profile

Roadway 1 (Width: 5.000 m, Number of lanes: 2, tarmac: R3, q0: 0.070)

Maintenance factor: 0.85

Luminaire Arrangements



Luminaire: SIA Elnitor RoadSpark SLIM 80W
Luminous flux (Luminaire): 8081 lm
Luminous flux (Lamps): 9200 lm
Luminaire Wattage: 80.0 W
Arrangement: Single row, bottom
Pole Distance: 42.000 m
Mounting Height (1): 8.500 m
Height: 8.500 m
Overhang (2): -3.000 m
Boom Angle (3): 5.0 °
Boom Length (4): 2.000 m

Maximum luminous intensities
at 70°: 501 cd/klm
at 80°: 188 cd/klm
at 90°: 19 cd/klm

Any direction forming the specified angle from the downward vertical, with the luminaire installed for use.

No luminous intensities above 95°.

Arrangement complies with luminous intensity class G1.

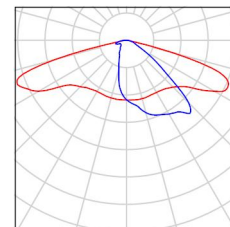
Arrangement complies with glare index class D.4.

Operator
Telephone
Fax
e-Mail

Kalēju iela (pirmais posms) / Luminaire parts list

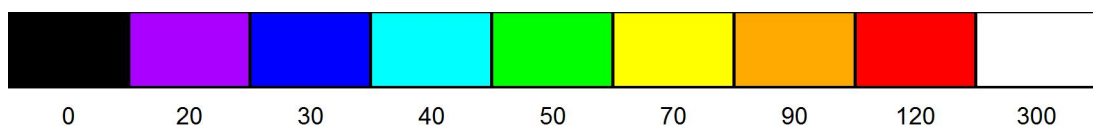
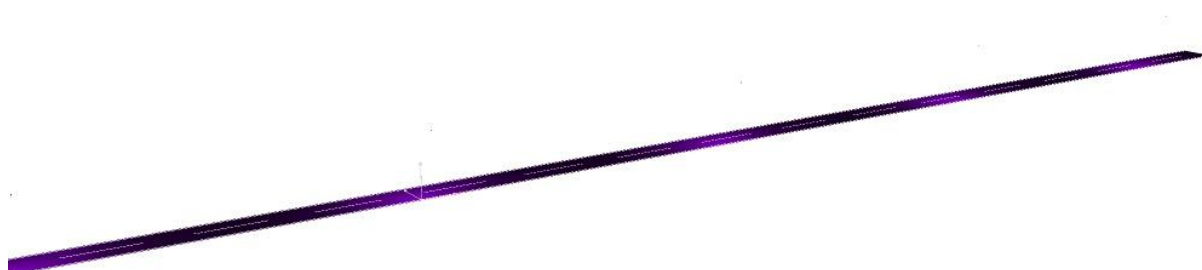
SIA Elnitor RoadSpark SLIM 80W
Article No.:
Luminous flux (Luminaire): 8081 lm
Luminous flux (Lamps): 9200 lm
Luminaire Wattage: 80.0 W
Luminaire classification according to CIE: 100
CIE flux code: 35 68 94 100 88
Fitting: 1 x Cree XP-G (Correction Factor 0.600).

See our luminaire
catalog for an image of
the luminaire.



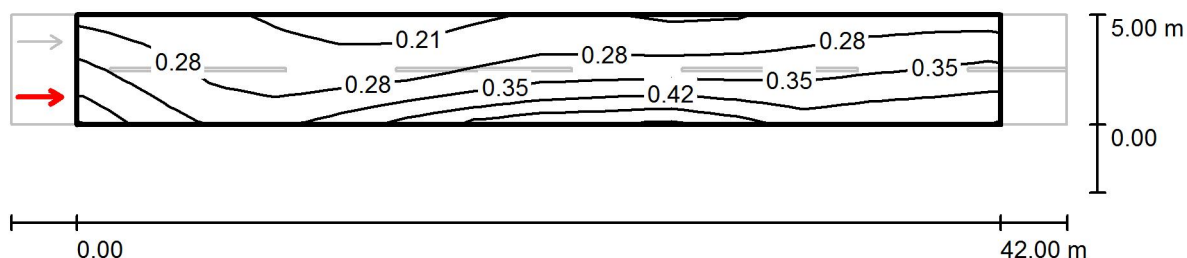
Operator
Telephone
Fax
e-Mail

Kalēju iela (pirmais posms) / False Colour Rendering



Operator
Telephone
Fax
e-Mail

Kalēju iela (pirmais posms) / Valuation Field Roadway 1 / Observer 1 / Isolines (L)



Values in Candela/m², Scale 1 : 344

Grid: 14 x 6 Points

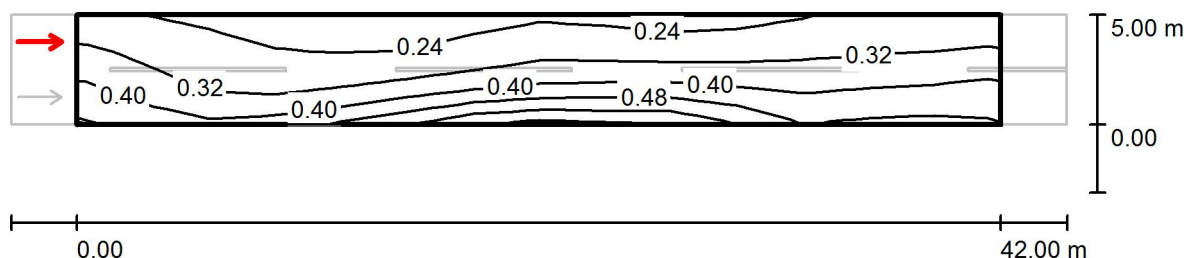
Observer Position: (-60.000 m, 1.250 m, 1.500 m)

tarmac: R3, q0: 0.070

	L_{av} [cd/m²]	U0	UI	TI [%]
Calculated values:	0.32	0.56	0.60	14
Required values according to class ME6:	≥ 0.30	≥ 0.35	≥ 0.40	≤ 15
Fulfilled/Not fulfilled:	✓	✓	✓	✓

Operator
Telephone
Fax
e-Mail

Kalēju iela (pirmais posms) / Valuation Field Roadway 1 / Observer 2 / Isolines (L)



Values in Candela/m², Scale 1 : 344

Grid: 14 x 6 Points

Observer Position: (-60.000 m, 3.750 m, 1.500 m)

tarmac: R3, q0: 0.070

	L_{av} [cd/m ²]	U0	UI	TI [%]
Calculated values:	0.34	0.55	0.70	10
Required values according to class ME6:	≥ 0.30	≥ 0.35	≥ 0.40	≤ 15
Fulfilled/Not fulfilled:	✓	✓	✓	✓

Operator
Telephone
Fax
e-Mail

Kalēju iela (otrais posms) / Planning data

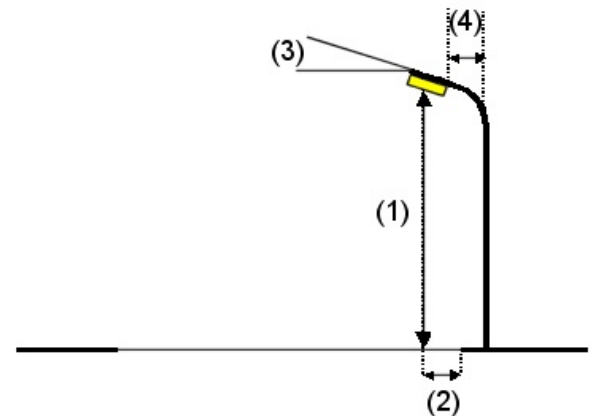
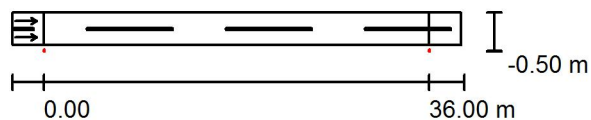
No Cepļu ielas līdz tiltam

Street Profile

Roadway 1 (Width: 3.000 m, Number of lanes: 2, tarmac: R3, q0: 0.070)

Maintenance factor: 0.85

Luminaire Arrangements



Luminaire:	RoadSpark SLIM 60W
Luminous flux (Luminaire):	6072 lm
Luminous flux (Lamps):	7440 lm
Luminaire Wattage:	60.0 W
Arrangement:	Single row, bottom
Pole Distance:	36.000 m
Mounting Height (1):	8.000 m
Height:	8.000 m
Overhang (2):	-0.500 m
Boom Angle (3):	0.0 °
Boom Length (4):	1.500 m

Maximum luminous intensities

at 70°:	457 cd/klm
at 80°:	96 cd/klm
at 90°:	12 cd/klm

Any direction forming the specified angle from the downward vertical, with the luminaire installed for use.

No luminous intensities above 90°.

Arrangement complies with luminous intensity class G3.

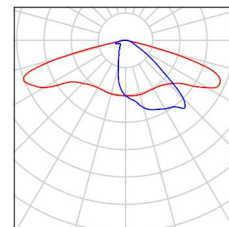
Arrangement complies with glare index class D.4.

Operator
Telephone
Fax
e-Mail

Kalēju iela (otrais posms) / Luminaire parts list

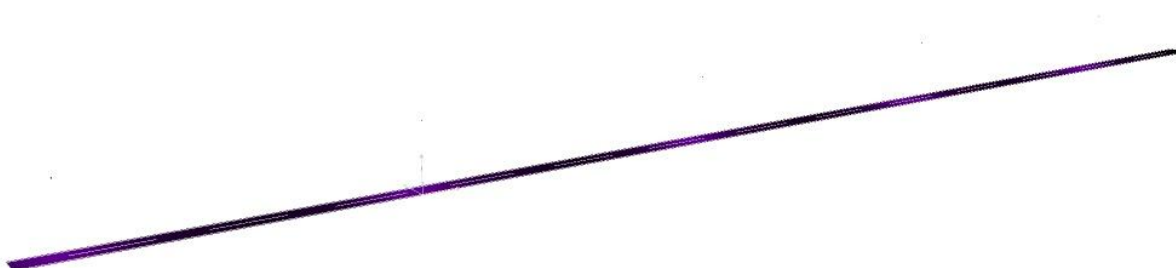
RoadSpark SLIM 60W
Article No.:
Luminous flux (Luminaire): 6072 lm
Luminous flux (Lamps): 7440 lm
Luminaire Wattage: 60.0 W
Luminaire classification according to CIE: 100
CIE flux code: 35 68 94 100 82
Fitting: 1 x Cree XP-G (Correction Factor 0.500).

See our luminaire
catalog for an image of
the luminaire.



Operator
Telephone
Fax
e-Mail

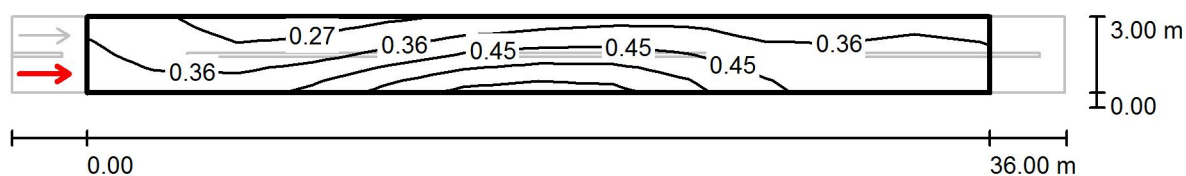
Kalēju iela (otrais posms) / False Colour Rendering



0 20 30 40 50 70 90 120 300 lx

Operator
Telephone
Fax
e-Mail

Kalēju iela (otrais posms) / Valuation Field Roadway 1 / Observer 1 / Isolines (L)



Values in Candela/m², Scale 1 : 301

Grid: 12 x 6 Points

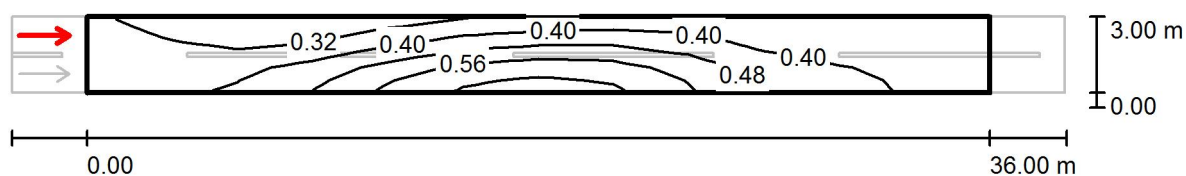
Observer Position: (-60.000 m, 0.750 m, 1.500 m)

tarmac: R3, q0: 0.070

	L_{av} [cd/m ²]	U0	UI	TI [%]
Calculated values:	0.40	0.57	0.60	10
Required values according to class ME6:	≥ 0.30	≥ 0.35	≥ 0.40	≤ 15
Fulfilled/Not fulfilled:	✓	✓	✓	✓

Operator
Telephone
Fax
e-Mail

Kalēju iela (otrais posms) / Valuation Field Roadway 1 / Observer 2 / Isolines (L)



Values in Candela/m², Scale 1 : 301

Grid: 12 x 6 Points

Observer Position: (-60.000 m, 2.250 m, 1.500 m)

tarmac: R3, q0: 0.070

	L_{av} [cd/m ²]	U0	UI	TI [%]
Calculated values:	0.42	0.57	0.63	9
Required values according to class ME6:	≥ 0.30	≥ 0.35	≥ 0.40	≤ 15
Fulfilled/Not fulfilled:	✓	✓	✓	✓