

Aloja 1 daļa dimmēts režīms

Rīgas iela
Valmieras iela
Kalēju iela
Ausekļu iela
Lidlauka iela
Brīvības iela
Parka iela
Jaunā iela
Miera iela
Dārza iela

Partner for Contact:
Order No.:
Company:
Customer No.:

Date: 13.04.2015
Operator:

Operator
Telephone
Fax
e-Mail

Table of contents

Aloja 1 daļa dimmēts režīms	
Project Cover	1
Table of contents	2
SIA Elnitor RoadSpark SLIM 80W	
Luminaire Data Sheet	5
RoadSpark SLIM 60W	
Luminaire Data Sheet	6
Rīgas iela	
Planning data	7
Luminaire parts list	8
False Colour Rendering	9
Valuation Fields	
Valuation Field Roadway 1	
Observer	
Observer 1	
Isolines (L)	10
Observer 2	
Isolines (L)	11
Valmieras iela	
Planning data	12
Luminaire parts list	13
False Colour Rendering	14
Valuation Fields	
Valuation Field Roadway 1	
Observer	
Observer 1	
Isolines (L)	15
Observer 2	
Isolines (L)	16
Kalēju iela	
Planning data	17
Luminaire parts list	18
False Colour Rendering	19
Valuation Fields	
Valuation Field Roadway 1	
Observer	
Observer 1	
Isolines (L)	20
Observer 2	
Isolines (L)	21
Skolas iela	
Planning data	22
Luminaire parts list	23
False Colour Rendering	24
Valuation Fields	
Valuation Field Roadway 1	
Observer	
Observer 1	
Isolines (L)	25
Observer 2	
Isolines (L)	26
Ausekļa iela (pirmais posms)	
Planning data	27
Luminaire parts list	28

Operator
Telephone
Fax
e-Mail

Table of contents

False Colour Rendering	29
Valuation Fields	
Valuation Field Roadway 1	
Observer	
Observer 1	
Isolines (L)	30
Observer 2	
Isolines (L)	31
Ausekļa iela (otrais posms)	
Planning data	32
Luminaire parts list	33
False Colour Rendering	34
Valuation Fields	
Valuation Field Roadway 1	
Observer	
Observer 1	
Isolines (L)	35
Observer 2	
Isolines (L)	36
Lidlauka iela	
Planning data	37
Luminaire parts list	38
False Colour Rendering	39
Valuation Fields	
Valuation Field Roadway 1	
Observer	
Observer 1	
Isolines (L)	40
Observer 2	
Isolines (L)	41
Brīvības iela	
Planning data	42
Luminaire parts list	43
False Colour Rendering	44
Valuation Fields	
Valuation Field Roadway 1	
Observer	
Observer 1	
Isolines (L)	45
Observer 2	
Isolines (L)	46
Parka iela	
Planning data	47
Luminaire parts list	48
False Colour Rendering	49
Valuation Fields	
Valuation Field Roadway 1	
Observer	
Observer 1	
Isolines (L)	50
Observer 2	
Isolines (L)	51
Jaunā iela	
Planning data	52

Operator
Telephone
Fax
e-Mail

Table of contents

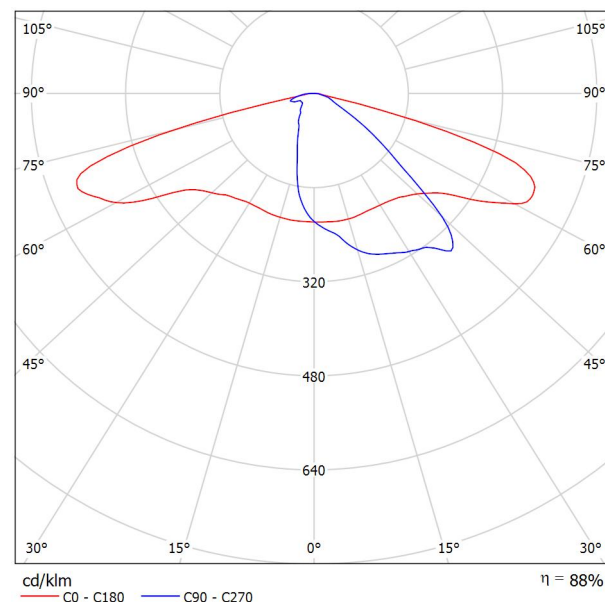
Luminaire parts list	53
False Colour Rendering	54
Valuation Fields	
Valuation Field Roadway 1	
Observer	
Observer 1	
Isolines (L)	55
Observer 2	
Isolines (L)	56
Miera iela	
Planning data	57
Luminaire parts list	58
False Colour Rendering	59
Valuation Fields	
Valuation Field Roadway 1	
Observer	
Observer 1	
Isolines (L)	60
Observer 2	
Isolines (L)	61
Dārza iela	
Planning data	62
Luminaire parts list	63
False Colour Rendering	64
Valuation Fields	
Valuation Field Roadway 1	
Observer	
Observer 1	
Isolines (L)	65
Observer 2	
Isolines (L)	66

Operator
Telephone
Fax
e-Mail

SIA Elnitor RoadSpark SLIM 80W / Luminaire Data Sheet

Luminous emittance 1:

See our luminaire catalog for an image of the luminaire.



Luminaire classification according to CIE: 100
CIE flux code: 35 68 94 100 88

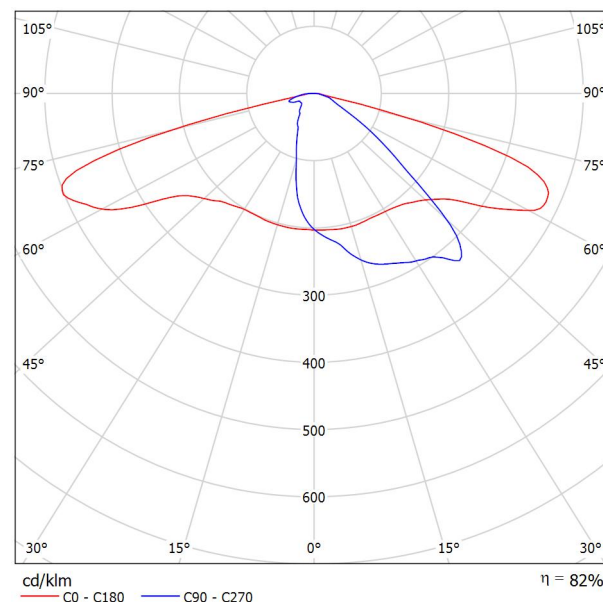
Due to missing symmetry properties, no UGR table can be displayed for this luminaire.

Operator
Telephone
Fax
e-Mail

RoadSpark SLIM 60W / Luminaire Data Sheet

Luminous emittance 1:

See our luminaire catalog for an image of the luminaire.



Luminaire classification according to CIE: 100
CIE flux code: 35 68 94 100 82

Due to missing symmetry properties, no UGR table
can be displayed for this luminaire.

Operator
Telephone
Fax
e-Mail

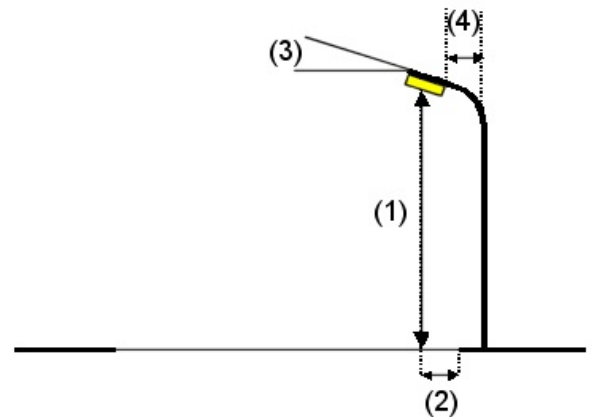
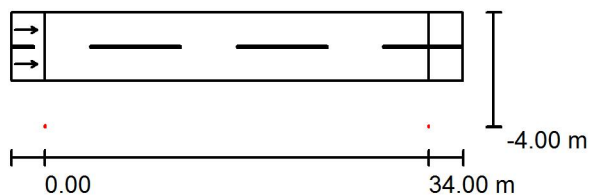
Rīgas iela / Planning data

Street Profile

Roadway 1 (Width: 6.000 m, Number of lanes: 2, tarmac: R3, q0: 0.070)

Maintenance factor: 0.85

Luminaire Arrangements



Luminaire:	SIA Elnitor RoadSpark SLIM 80W	Maximum luminous intensities
Luminous flux (Luminaire):	8081 lm	at 70°: 470 cd/klm
Luminous flux (Lamps):	9200 lm	at 80°: 374 cd/klm
Luminaire Wattage:	80.0 W	at 90°: 57 cd/klm
Arrangement:	Single row, bottom	
Pole Distance:	34.000 m	
Mounting Height (1):	8.000 m	
Height:	8.000 m	
Overhang (2):	-4.000 m	
Boom Angle (3):	15.0 °	
Boom Length (4):	1.500 m	

Any direction forming the specified angle from the downward vertical, with the luminaire installed for use.

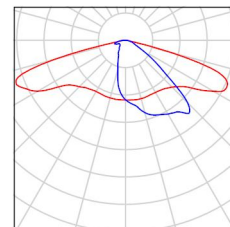
Arrangement complies with glare index class D.2.

Operator
Telephone
Fax
e-Mail

Rīgas iela / Luminaire parts list

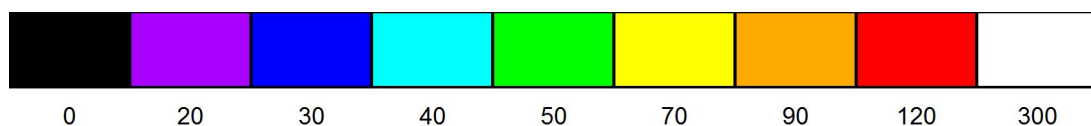
SIA Elnitor RoadSpark SLIM 80W
Article No.:
Luminous flux (Luminaire): 8081 lm
Luminous flux (Lamps): 9200 lm
Luminaire Wattage: 80.0 W
Luminaire classification according to CIE: 100
CIE flux code: 35 68 94 100 88
Fitting: 1 x Cree XP-G (Correction Factor 0.700).

See our luminaire
catalog for an image of
the luminaire.



Operator
Telephone
Fax
e-Mail

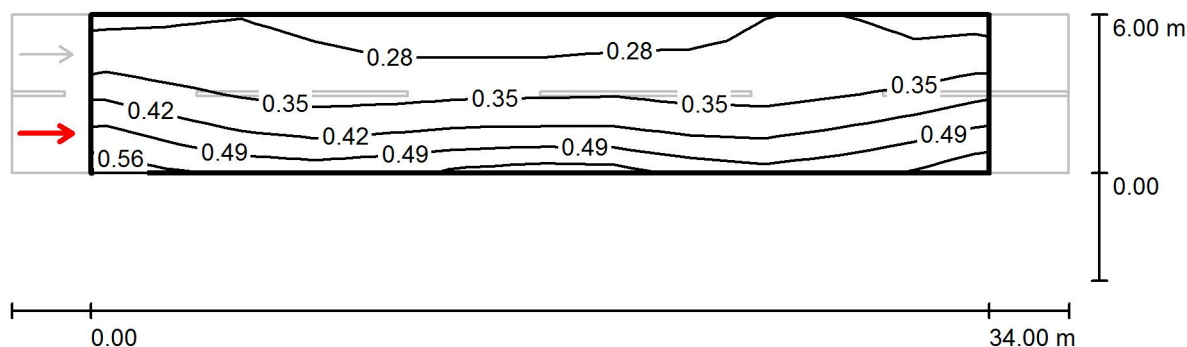
Rīgas iela / False Colour Rendering



lx

Operator
Telephone
Fax
e-Mail

Rīgas iela / Valuation Field Roadway 1 / Observer 1 / Isolines (L)



Values in Candela/m², Scale 1 : 286

Grid: 12 x 6 Points

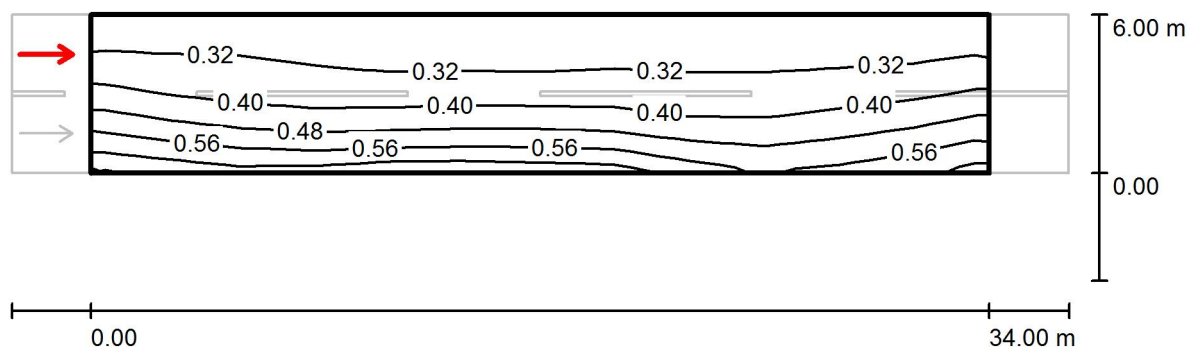
Observer Position: (-60.000 m, 1.500 m, 1.500 m)

tarmac: R3, q0: 0.070

	L_{av} [cd/m ²]	U0	UI	TI [%]
Calculated values:	0.37	0.63	0.77	14
Required values according to class ME6:	≥ 0.30	≥ 0.35	≥ 0.40	≤ 15
Fulfilled/Not fulfilled:	✓	✓	✓	✓

Operator
Telephone
Fax
e-Mail

Rīgas iela / Valuation Field Roadway 1 / Observer 2 / Isolines (L)



Values in Candela/m², Scale 1 : 286

Grid: 12 x 6 Points

Observer Position: (-60.000 m, 4.500 m, 1.500 m)

tarmac: R3, q0: 0.070

	L_{av} [cd/m ²]	U0	UI	TI [%]
Calculated values:	0.40	0.61	0.90	9
Required values according to class ME6:	≥ 0.30	≥ 0.35	≥ 0.40	≤ 15
Fulfilled/Not fulfilled:	✓	✓	✓	✓

Operator
Telephone
Fax
e-Mail

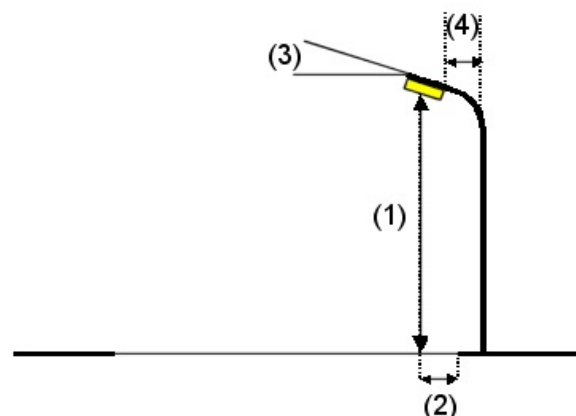
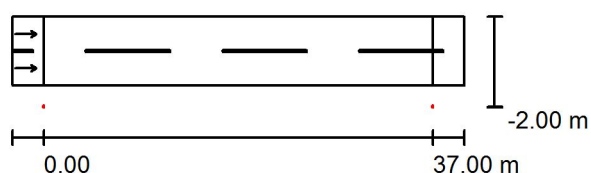
Valmieras iela / Planning data

Street Profile

Roadway 1 (Width: 6.500 m, Number of lanes: 2, tarmac: R3, q0: 0.070)

Maintenance factor: 0.85

Luminaire Arrangements



Luminaire: SIA Elnitor RoadSpark SLIM 80W

Luminous flux (Luminaire): 8081 lm

Luminous flux (Lamps): 9200 lm

Luminaire Wattage: 80.0 W

Arrangement: Single row, bottom

Pole Distance: 37.000 m

Mounting Height (1): 8.000 m

Height: 8.000 m

Overhang (2): -2.000 m

Boom Angle (3): 0.0 °

Boom Length (4): 1.500 m

Maximum luminous intensities

at 70°: 492 cd/klm

at 80°: 103 cd/klm

at 90°: 13 cd/klm

Any direction forming the specified angle from the downward vertical, with the luminaire installed for use.

No luminous intensities above 90°.

Arrangement complies with luminous intensity class G2.

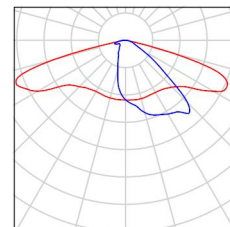
Arrangement complies with glare index class D.4.

Operator
Telephone
Fax
e-Mail

Valmieras iela / Luminaire parts list

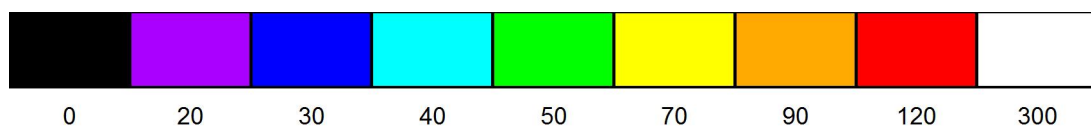
SIA Elnitor RoadSpark SLIM 80W
Article No.:
Luminous flux (Luminaire): 8081 lm
Luminous flux (Lamps): 9200 lm
Luminaire Wattage: 80.0 W
Luminaire classification according to CIE: 100
CIE flux code: 35 68 94 100 88
Fitting: 1 x Cree XP-G (Correction Factor 0.500).

See our luminaire
catalog for an image of
the luminaire.



Operator
Telephone
Fax
e-Mail

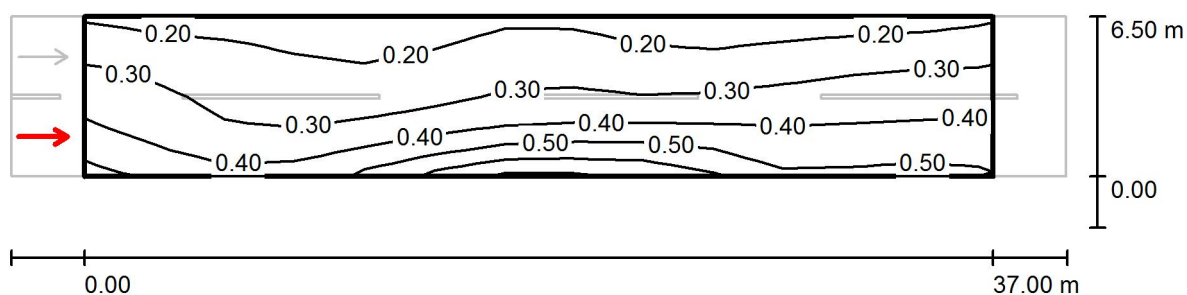
Valmieras iela / False Colour Rendering



lx

Operator
Telephone
Fax
e-Mail

Valmieras iela / Valuation Field Roadway 1 / Observer 1 / Isolines (L)



Values in Candela/m², Scale 1 : 308

Grid: 13 x 6 Points

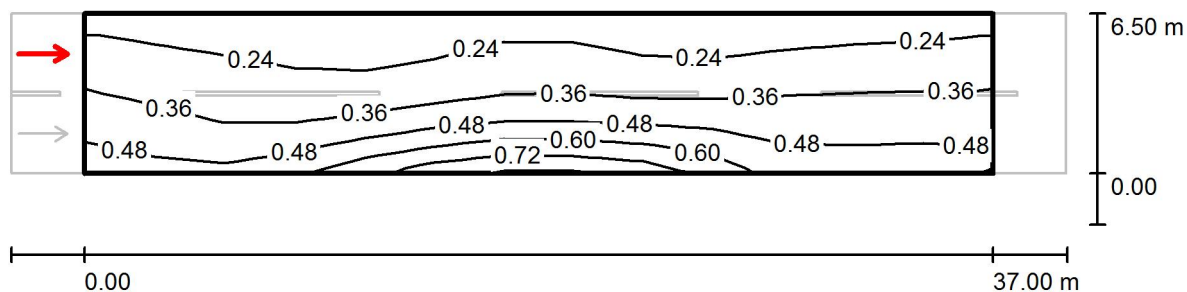
Observer Position: (-60.000 m, 1.625 m, 1.500 m)

tarmac: R3, q0: 0.070

	L_{av} [cd/m ²]	U0	UI	TI [%]
Calculated values:	0.33	0.48	0.63	14
Required values according to class ME6:	≥ 0.30	≥ 0.35	≥ 0.40	≤ 15
Fulfilled/Not fulfilled:	✓	✓	✓	✓

Operator
Telephone
Fax
e-Mail

Valmieras iela / Valuation Field Roadway 1 / Observer 2 / Isolines (L)



Values in Candela/m², Scale 1 : 308

Grid: 13 x 6 Points

Observer Position: (-60.000 m, 4.875 m, 1.500 m)

tarmac: R3, q0: 0.070

	L_{av} [cd/m ²]	U0	UI	TI [%]
Calculated values:	0.36	0.45	0.72	8
Required values according to class ME6:	≥ 0.30	≥ 0.35	≥ 0.40	≤ 15
Fulfilled/Not fulfilled:	✓	✓	✓	✓

Operator
Telephone
Fax
e-Mail

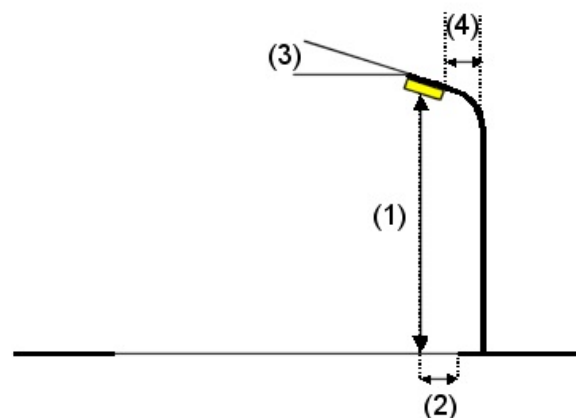
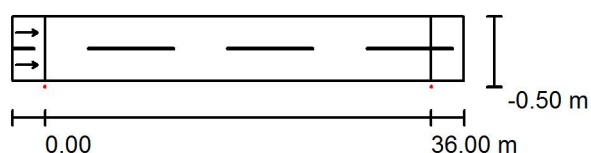
Kalēju iela / Planning data

Street Profile

Roadway 1 (Width: 6.000 m, Number of lanes: 2, tarmac: R3, q0: 0.070)

Maintenance factor: 0.85

Luminaire Arrangements



Luminaire: SIA Elnitor RoadSpark SLIM 80W

Luminous flux (Luminaire): 8081 lm

Luminous flux (Lamps): 9200 lm

Luminaire Wattage: 80.0 W

Arrangement: Single row, bottom

Pole Distance: 36.000 m

Mounting Height (1): 8.000 m

Height: 8.000 m

Overhang (2): -0.500 m

Boom Angle (3): 0.0 °

Boom Length (4): 1.500 m

Maximum luminous intensities

at 70°: 492 cd/klm

at 80°: 103 cd/klm

at 90°: 13 cd/klm

Any direction forming the specified angle from the downward vertical, with the luminaire installed for use.

No luminous intensities above 90°.

Arrangement complies with luminous intensity class G2.

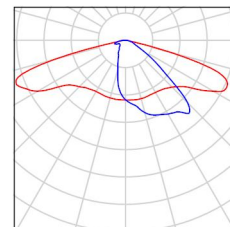
Arrangement complies with glare index class D.4.

Operator
Telephone
Fax
e-Mail

Kalēju iela / Luminaire parts list

SIA Elnitor RoadSpark SLIM 80W
Article No.:
Luminous flux (Luminaire): 8081 lm
Luminous flux (Lamps): 9200 lm
Luminaire Wattage: 80.0 W
Luminaire classification according to CIE: 100
CIE flux code: 35 68 94 100 88
Fitting: 1 x Cree XP-G (Correction Factor 0.500).

See our luminaire
catalog for an image of
the luminaire.



Operator
Telephone
Fax
e-Mail

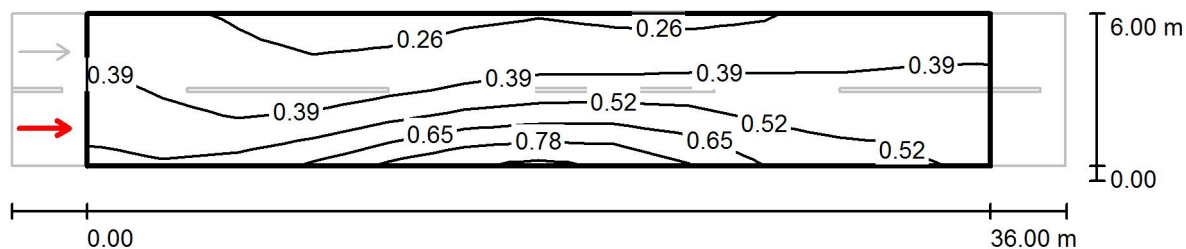
Kalēju iela / False Colour Rendering



0 20 30 40 50 70 90 120 300 lx

Operator
Telephone
Fax
e-Mail

Kalēju iela / Valuation Field Roadway 1 / Observer 1 / Isolines (L)



Values in Candela/m², Scale 1 : 301

Grid: 12 x 6 Points

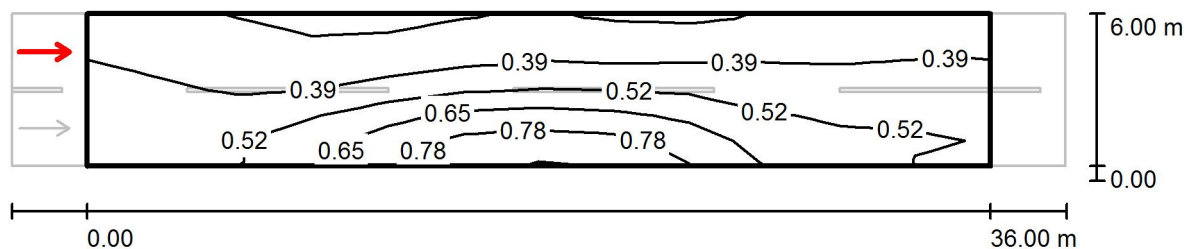
Observer Position: (-60.000 m, 1.500 m, 1.500 m)

tarmac: R3, q0: 0.070

	L_{av} [cd/m ²]	U0	UI	TI [%]
Calculated values:	0.43	0.51	0.61	12
Required values according to class ME6:	≥ 0.30	≥ 0.35	≥ 0.40	≤ 15
Fulfilled/Not fulfilled:	✓	✓	✓	✓

Operator
Telephone
Fax
e-Mail

Kalēju iela / Valuation Field Roadway 1 / Observer 2 / Isolines (L)



Values in Candela/m², Scale 1 : 301

Grid: 12 x 6 Points

Observer Position: (-60.000 m, 4.500 m, 1.500 m)

tarmac: R3, q0: 0.070

	L_{av} [cd/m ²]	U0	UI	TI [%]
Calculated values:	0.47	0.51	0.74	9
Required values according to class ME6:	≥ 0.30	≥ 0.35	≥ 0.40	≤ 15
Fulfilled/Not fulfilled:	✓	✓	✓	✓

Operator
Telephone
Fax
e-Mail

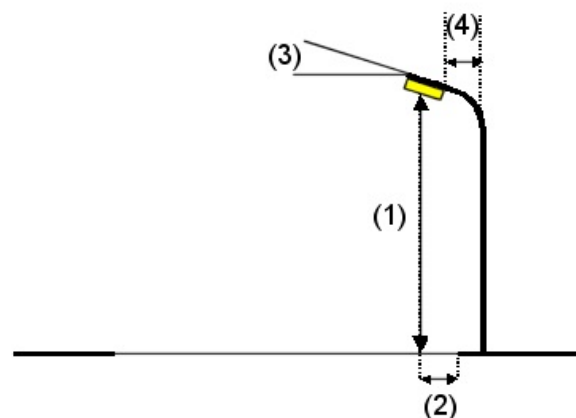
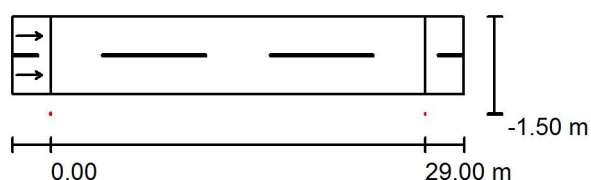
Skolas iela / Planning data

Street Profile

Roadway 1 (Width: 6.000 m, Number of lanes: 2, tarmac: R3, q0: 0.070)

Maintenance factor: 0.85

Luminaire Arrangements



Luminaire: SIA Elnitor RoadSpark SLIM 80W
Luminous flux (Luminaire): 8081 lm
Luminous flux (Lamps): 9200 lm
Luminaire Wattage: 80.0 W
Arrangement: Single row, bottom
Pole Distance: 29.000 m
Mounting Height (1): 8.000 m
Height: 8.000 m
Overhang (2): -1.500 m
Boom Angle (3): 0.0 °
Boom Length (4): 1.500 m

Maximum luminous intensities

at 70°: 492 cd/klm
at 80°: 103 cd/klm
at 90°: 13 cd/klm

Any direction forming the specified angle from the downward vertical, with the luminaire installed for use.

No luminous intensities above 90°.

Arrangement complies with luminous intensity class G2.

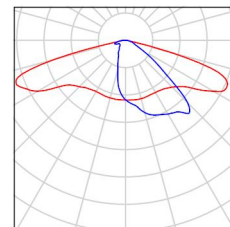
Arrangement complies with glare index class D.4.

Operator
Telephone
Fax
e-Mail

Skolas iela / Luminaire parts list

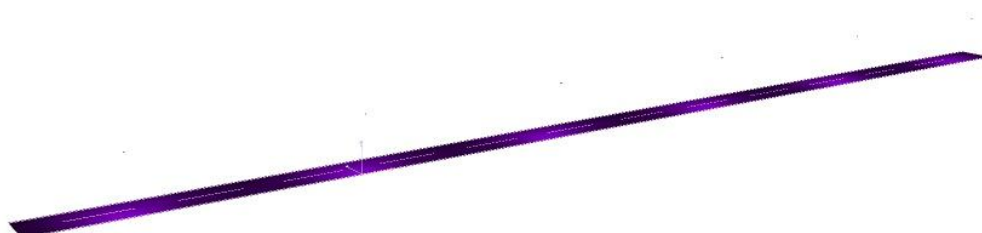
SIA Elnitor RoadSpark SLIM 80W
Article No.:
Luminous flux (Luminaire): 8081 lm
Luminous flux (Lamps): 9200 lm
Luminaire Wattage: 80.0 W
Luminaire classification according to CIE: 100
CIE flux code: 35 68 94 100 88
Fitting: 1 x Cree XP-G (Correction Factor 0.500).

See our luminaire
catalog for an image of
the luminaire.



Operator
Telephone
Fax
e-Mail

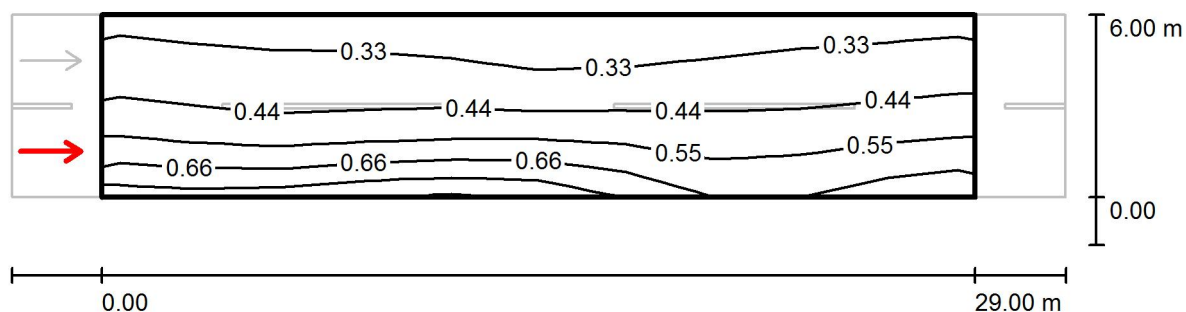
Skolas iela / False Colour Rendering



0 20 30 40 50 70 90 120 300 lx

Operator
Telephone
Fax
e-Mail

Skolas iela / Valuation Field Roadway 1 / Observer 1 / Isolines (L)



Values in Candela/m², Scale 1 : 251

Grid: 10 x 6 Points

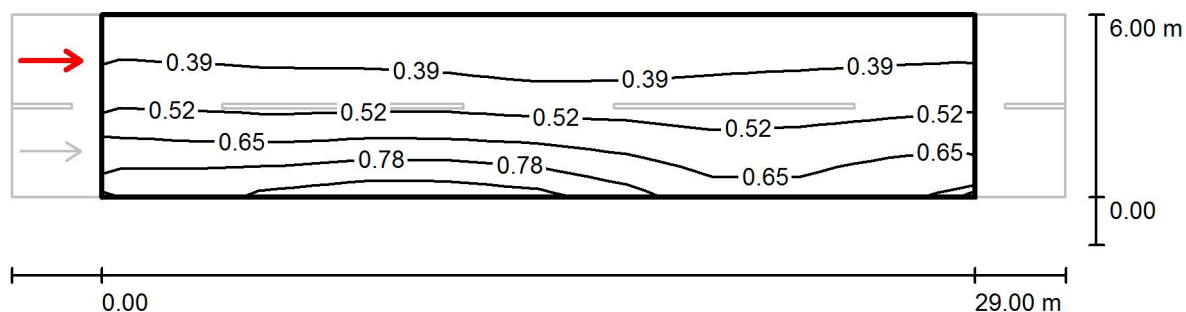
Observer Position: (-60.000 m, 1.500 m, 1.500 m)

tarmac: R3, q0: 0.070

	L_{av} [cd/m ²]	U0	UI	TI [%]
Calculated values:	0.46	0.55	0.84	11
Required values according to class ME6:	≥ 0.30	≥ 0.35	≥ 0.40	≤ 15
Fulfilled/Not fulfilled:	✓	✓	✓	✓

Operator
Telephone
Fax
e-Mail

Skolas iela / Valuation Field Roadway 1 / Observer 2 / Isolines (L)



Values in Candela/m², Scale 1 : 251

Grid: 10 x 6 Points

Observer Position: (-60.000 m, 4.500 m, 1.500 m)

tarmac: R3, q0: 0.070

	L_{av} [cd/m ²]	U0	UI	TI [%]
Calculated values:	0.52	0.52	0.84	7
Required values according to class ME6:	≥ 0.30	≥ 0.35	≥ 0.40	≤ 15
Fulfilled/Not fulfilled:	✓	✓	✓	✓

Operator
Telephone
Fax
e-Mail

Ausekļa iela (pirmais posms) / Planning data

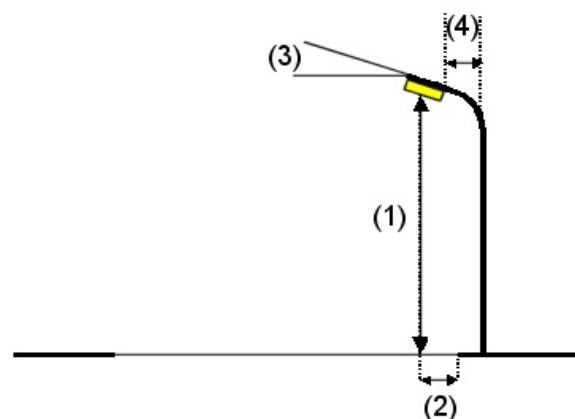
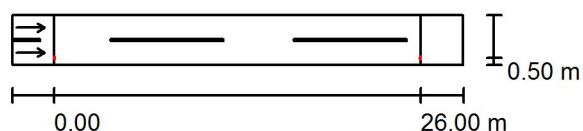
No Brīvības ielas līdz Dārza ielai

Street Profile

Roadway 1 (Width: 3.500 m, Number of lanes: 2, tarmac: R3, q0: 0.070)

Maintenance factor: 0.85

Luminaire Arrangements



Luminaire:	SIA Elnitor RoadSpark SLIM 80W
Luminous flux (Luminaire):	8081 lm
Luminous flux (Lamps):	9200 lm
Luminaire Wattage:	80.0 W
Arrangement:	Single row, bottom
Pole Distance:	26.000 m
Mounting Height (1):	8.000 m
Height:	8.000 m
Overhang (2):	0.500 m
Boom Angle (3):	0.0 °
Boom Length (4):	1.500 m

Maximum luminous intensities

at 70°: 492 cd/klm

at 80°: 103 cd/klm

at 90°: 13 cd/klm

Any direction forming the specified angle from the downward vertical, with the luminaire installed for use.

No luminous intensities above 90°.

Arrangement complies with luminous intensity class G2.

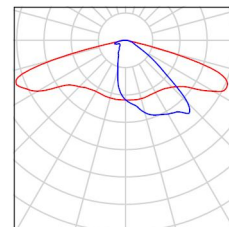
Arrangement complies with glare index class D.4.

Operator
Telephone
Fax
e-Mail

Ausekļa iela (pirmais posms) / Luminaire parts list

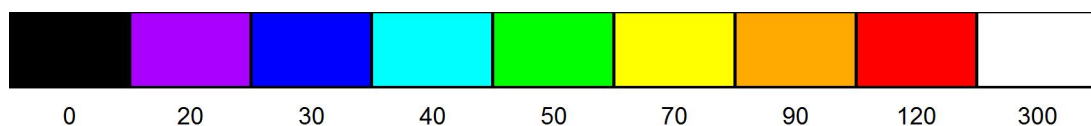
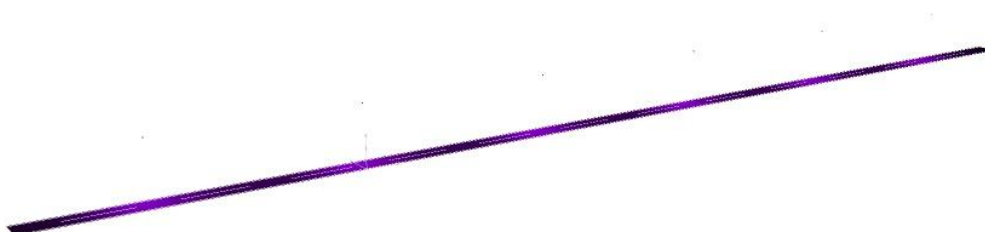
SIA Elnitor RoadSpark SLIM 80W
Article No.:
Luminous flux (Luminaire): 8081 lm
Luminous flux (Lamps): 9200 lm
Luminaire Wattage: 80.0 W
Luminaire classification according to CIE: 100
CIE flux code: 35 68 94 100 88
Fitting: 1 x Cree XP-G (Correction Factor 0.500).

See our luminaire
catalog for an image of
the luminaire.



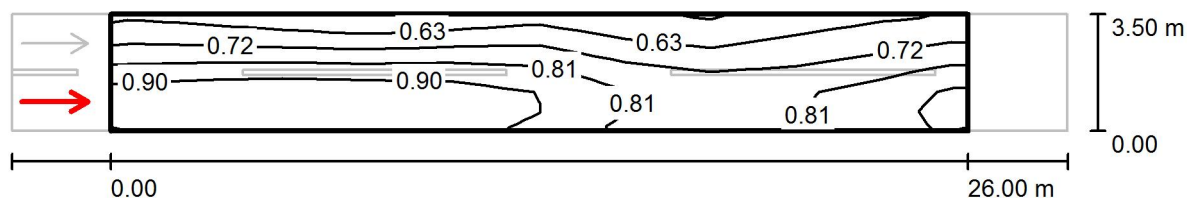
Operator
Telephone
Fax
e-Mail

Ausekļa iela (pirmais posms) / False Colour Rendering



Operator
Telephone
Fax
e-Mail

Ausekļa iela (pirmais posms) / Valuation Field Roadway 1 / Observer 1 / Isolines (L)



Values in Candela/m², Scale 1 : 229

Grid: 10 x 6 Points

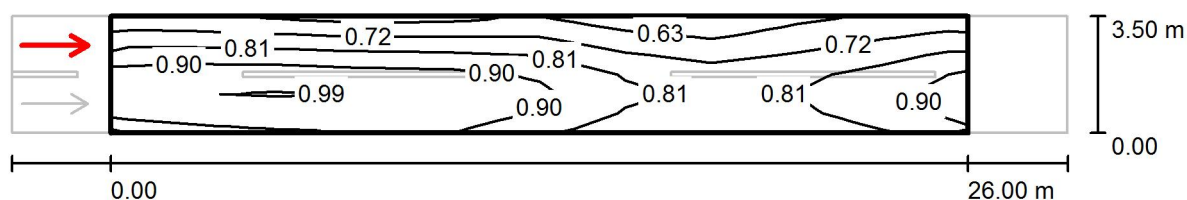
Observer Position: (-60.000 m, 0.875 m, 1.500 m)

tarmac: R3, q0: 0.070

	L_{av} [cd/m ²]	U0	UI	TI [%]
Calculated values:	0.79	0.67	0.79	9
Required values according to class ME6:	≥ 0.30	≥ 0.35	≥ 0.40	≤ 15
Fulfilled/Not fulfilled:	✓	✓	✓	✓

Operator
Telephone
Fax
e-Mail

Ausekļa iela (pirmais posms) / Valuation Field Roadway 1 / Observer 2 / Isolines (L)



Values in Candela/m², Scale 1 : 229

Grid: 10 x 6 Points

Observer Position: (-60.000 m, 2.625 m, 1.500 m)

tarmac: R3, q0: 0.070

	L_{av} [cd/m²]	U0	UI	TI [%]
Calculated values:	0.82	0.68	0.80	8
Required values according to class ME6:	≥ 0.30	≥ 0.35	≥ 0.40	≤ 15
Fulfilled/Not fulfilled:	✓	✓	✓	✓

Operator
Telephone
Fax
e-Mail

Ausekļa iela (otrais posms) / Planning data

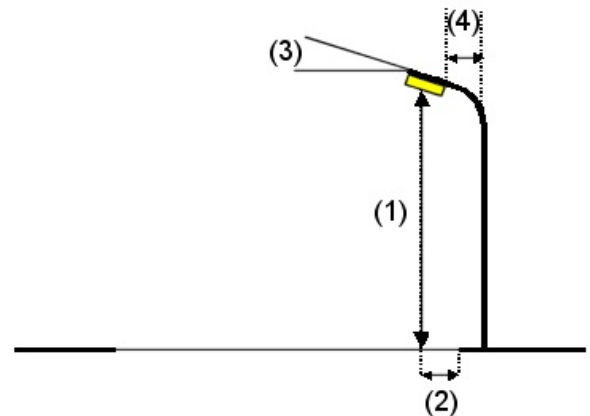
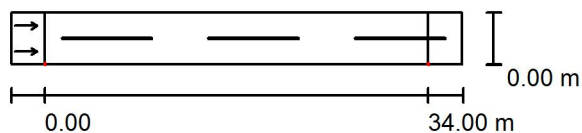
No Jūras ielas līdz Skolas ielai

Street Profile

Roadway 1 (Width: 4.500 m, Number of lanes: 2, tarmac: R3, q0: 0.070)

Maintenance factor: 0.85

Luminaire Arrangements



Luminaire:	SIA Elnitor RoadSpark SLIM 80W
Luminous flux (Luminaire):	8081 lm
Luminous flux (Lamps):	9200 lm
Luminaire Wattage:	80.0 W
Arrangement:	Single row, bottom
Pole Distance:	34.000 m
Mounting Height (1):	8.500 m
Height:	8.500 m
Overhang (2):	0.000 m
Boom Angle (3):	0.0 °
Boom Length (4):	1.500 m

Maximum luminous intensities

at 70°: 492 cd/klm

at 80°: 103 cd/klm

at 90°: 13 cd/klm

Any direction forming the specified angle from the downward vertical, with the luminaire installed for use.

No luminous intensities above 90°.

Arrangement complies with luminous intensity class G2.

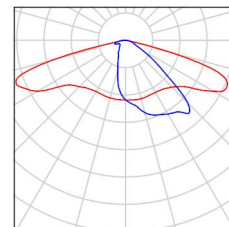
Arrangement complies with glare index class D.4.

Operator
Telephone
Fax
e-Mail

Ausekļa iela (otrais posms) / Luminaire parts list

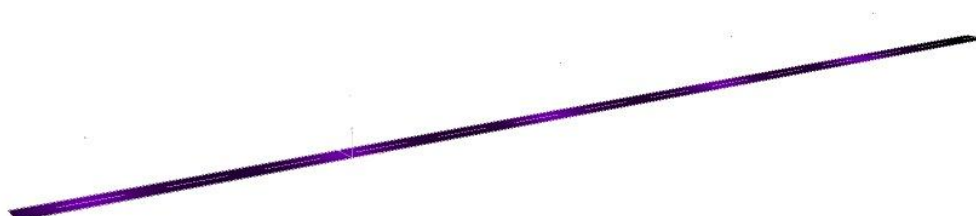
SIA Elnitor RoadSpark SLIM 80W
Article No.:
Luminous flux (Luminaire): 8081 lm
Luminous flux (Lamps): 9200 lm
Luminaire Wattage: 80.0 W
Luminaire classification according to CIE: 100
CIE flux code: 35 68 94 100 88
Fitting: 1 x Cree XP-G (Correction Factor 0.500).

See our luminaire
catalog for an image of
the luminaire.



Operator
Telephone
Fax
e-Mail

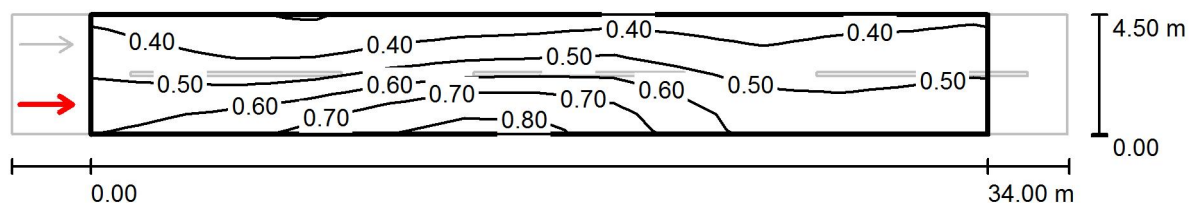
Ausekļa iela (otrais posms) / False Colour Rendering



lx

Operator
Telephone
Fax
e-Mail

Ausekļa iela (otrais posms) / Valuation Field Roadway 1 / Observer 1 / Isolines (L)



Values in Candela/m², Scale 1 : 286

Grid: 12 x 6 Points

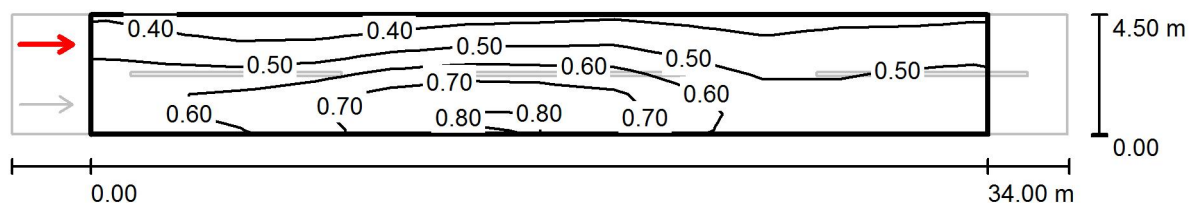
Observer Position: (-60.000 m, 1.125 m, 1.500 m)

tarmac: R3, q0: 0.070

	L_{av} [cd/m ²]	U0	UI	TI [%]
Calculated values:	0.51	0.58	0.66	10
Required values according to class ME6:	≥ 0.30	≥ 0.35	≥ 0.40	≤ 15
Fulfilled/Not fulfilled:	✓	✓	✓	✓

Operator
Telephone
Fax
e-Mail

Ausekļa iela (otrais posms) / Valuation Field Roadway 1 / Observer 2 / Isolines (L)



Values in Candela/m², Scale 1 : 286

Grid: 12 x 6 Points

Observer Position: (-60.000 m, 3.375 m, 1.500 m)

tarmac: R3, q0: 0.070

	L_{av} [cd/m ²]	U0	UI	TI [%]
Calculated values:	0.55	0.62	0.77	8
Required values according to class ME6:	≥ 0.30	≥ 0.35	≥ 0.40	≤ 15
Fulfilled/Not fulfilled:	✓	✓	✓	✓

Operator
Telephone
Fax
e-Mail

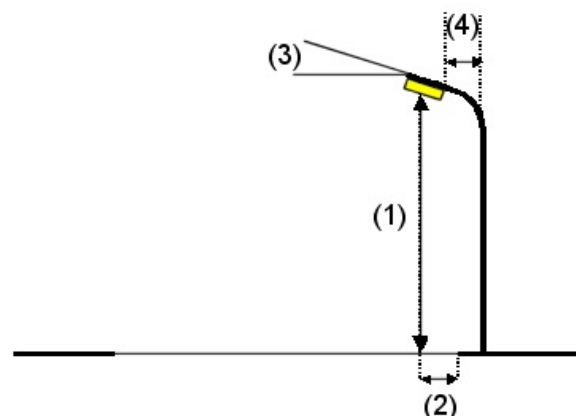
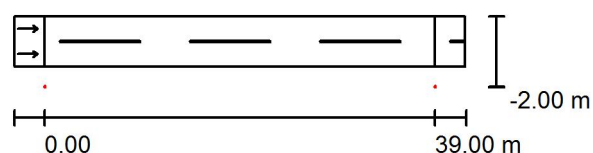
Lidlauka iela / Planning data

Street Profile

Roadway 1 (Width: 5.000 m, Number of lanes: 2, tarmac: R3, q0: 0.070)

Maintenance factor: 0.85

Luminaire Arrangements



Luminaire:	RoadSpark SLIM 60W
Luminous flux (Luminaire):	6072 lm
Luminous flux (Lamps):	7440 lm
Luminaire Wattage:	60.0 W
Arrangement:	Single row, bottom
Pole Distance:	39.000 m
Mounting Height (1):	8.500 m
Height:	8.500 m
Overhang (2):	-2.000 m
Boom Angle (3):	0.0 °
Boom Length (4):	2.000 m

Maximum luminous intensities

at 70°:	457 cd/klm
at 80°:	96 cd/klm
at 90°:	12 cd/klm

Any direction forming the specified angle from the downward vertical, with the luminaire installed for use.

No luminous intensities above 90°.

Arrangement complies with luminous intensity class G3.

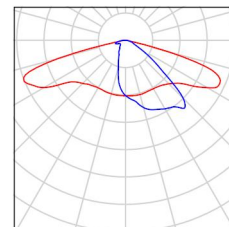
Arrangement complies with glare index class D.4.

Operator
Telephone
Fax
e-Mail

Lidlauka iela / Luminaire parts list

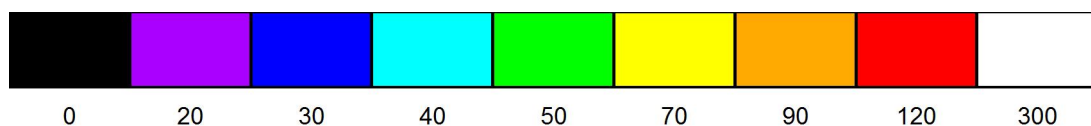
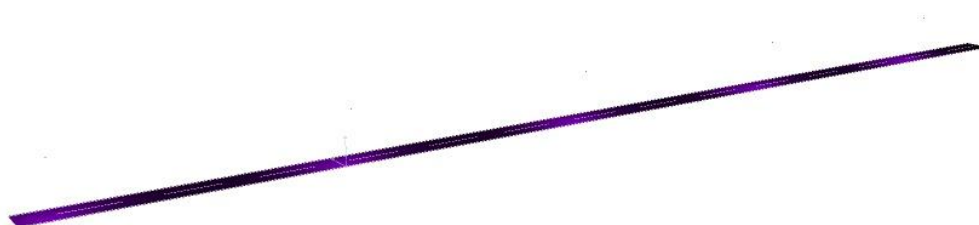
RoadSpark SLIM 60W
Article No.:
Luminous flux (Luminaire): 6072 lm
Luminous flux (Lamps): 7440 lm
Luminaire Wattage: 60.0 W
Luminaire classification according to CIE: 100
CIE flux code: 35 68 94 100 82
Fitting: 1 x Cree XP-G (Correction Factor 0.700).

See our luminaire
catalog for an image of
the luminaire.



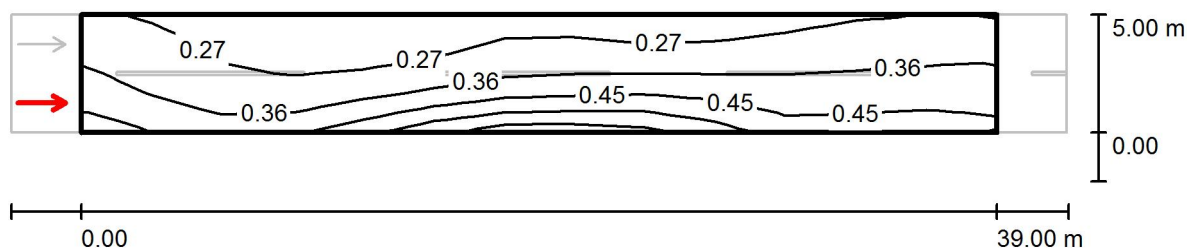
Operator
Telephone
Fax
e-Mail

Lidlauka iela / False Colour Rendering



Operator
Telephone
Fax
e-Mail

Lidlauka iela / Valuation Field Roadway 1 / Observer 1 / Isolines (L)



Values in Candela/m², Scale 1 : 322

Grid: 13 x 6 Points

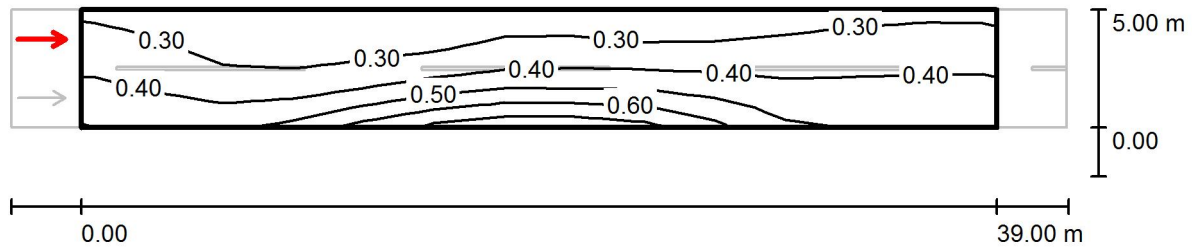
Observer Position: (-60.000 m, 1.250 m, 1.500 m)

tarmac: R3, q0: 0.070

	L_{av} [cd/m²]	U0	UI	TI [%]
Calculated values:	0.35	0.56	0.60	12
Required values according to class ME6:	≥ 0.30	≥ 0.35	≥ 0.40	≤ 15
Fulfilled/Not fulfilled:	✓	✓	✓	✓

Operator
Telephone
Fax
e-Mail

Lidlauka iela / Valuation Field Roadway 1 / Observer 2 / Isolines (L)



Values in Candela/m², Scale 1 : 322

Grid: 13 x 6 Points

Observer Position: (-60.000 m, 3.750 m, 1.500 m)

tarmac: R3, q0: 0.070

	L_{av} [cd/m²]	U0	UI	TI [%]
Calculated values:	0.38	0.55	0.73	9
Required values according to class ME6:	≥ 0.30	≥ 0.35	≥ 0.40	≤ 15
Fulfilled/Not fulfilled:	✓	✓	✓	✓

Operator
Telephone
Fax
e-Mail

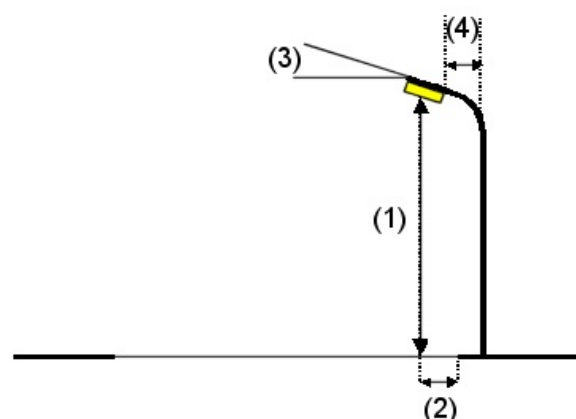
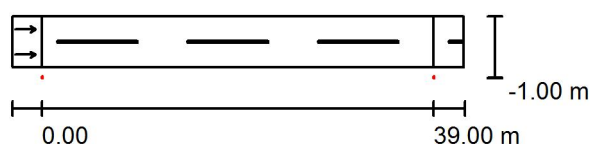
Brīvības iela / Planning data

Street Profile

Roadway 1 (Width: 5.000 m, Number of lanes: 2, tarmac: R3, q0: 0.070)

Maintenance factor: 0.85

Luminaire Arrangements



Luminaire: SIA Elnitor RoadSpark SLIM 80W

Luminous flux (Luminaire): 8081 lm

Luminous flux (Lamps): 9200 lm

Luminaire Wattage: 80.0 W

Arrangement: Single row, bottom

Pole Distance: 39.000 m

Mounting Height (1): 8.500 m

Height: 8.500 m

Overhang (2): -1.000 m

Boom Angle (3): 0.0 °

Boom Length (4): 1.500 m

Maximum luminous intensities

at 70°: 492 cd/klm

at 80°: 103 cd/klm

at 90°: 13 cd/klm

Any direction forming the specified angle from the downward vertical, with the luminaire installed for use.

No luminous intensities above 90°.

Arrangement complies with luminous intensity class G2.

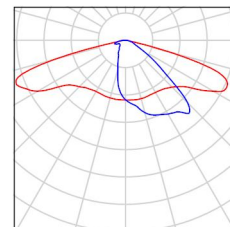
Arrangement complies with glare index class D.4.

Operator
Telephone
Fax
e-Mail

Brīvības iela / Luminaire parts list

SIA Elnitor RoadSpark SLIM 80W
Article No.:
Luminous flux (Luminaire): 8081 lm
Luminous flux (Lamps): 9200 lm
Luminaire Wattage: 80.0 W
Luminaire classification according to CIE: 100
CIE flux code: 35 68 94 100 88
Fitting: 1 x Cree XP-G (Correction Factor 0.500).

See our luminaire
catalog for an image of
the luminaire.



Operator
Telephone
Fax
e-Mail

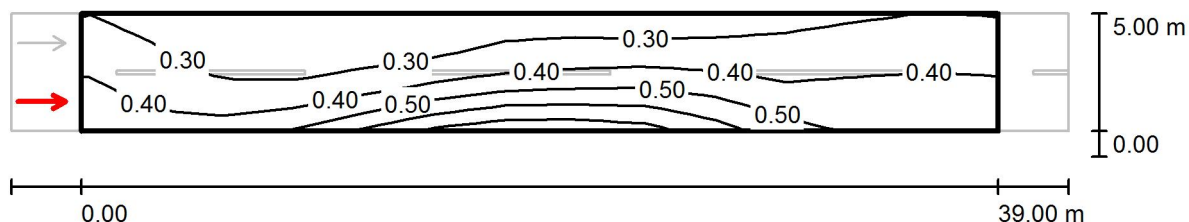
Brīvības iela / False Colour Rendering



lx

Operator
Telephone
Fax
e-Mail

Brīvības iela / Valuation Field Roadway 1 / Observer 1 / Isolines (L)



Values in Candela/m², Scale 1 : 322

Grid: 13 x 6 Points

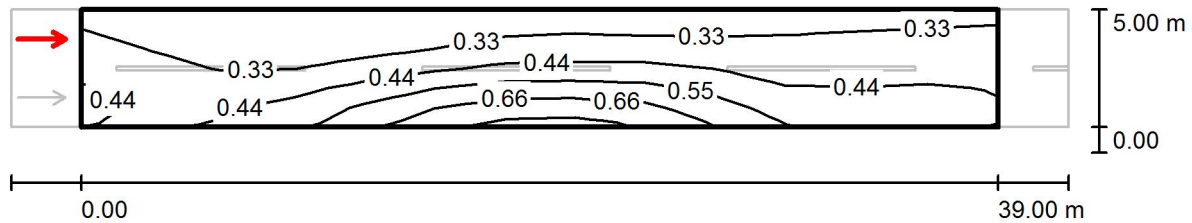
Observer Position: (-60.000 m, 1.250 m, 1.500 m)

tarmac: R3, q0: 0.070

	L_{av} [cd/m ²]	U0	UI	TI [%]
Calculated values:	0.38	0.55	0.57	12
Required values according to class ME6:	≥ 0.30	≥ 0.35	≥ 0.40	≤ 15
Fulfilled/Not fulfilled:	✓	✓	✓	✓

Operator
Telephone
Fax
e-Mail

Brīvības iela / Valuation Field Roadway 1 / Observer 2 / Isolines (L)



Values in Candela/m², Scale 1 : 322

Grid: 13 x 6 Points

Observer Position: (-60.000 m, 3.750 m, 1.500 m)

tarmac: R3, q0: 0.070

	L_{av} [cd/m ²]	U0	UI	TI [%]
Calculated values:	0.42	0.55	0.72	9
Required values according to class ME6:	≥ 0.30	≥ 0.35	≥ 0.40	≤ 15
Fulfilled/Not fulfilled:	✓	✓	✓	✓

Operator
Telephone
Fax
e-Mail

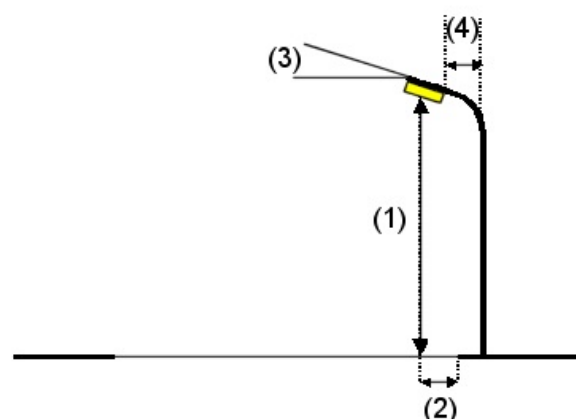
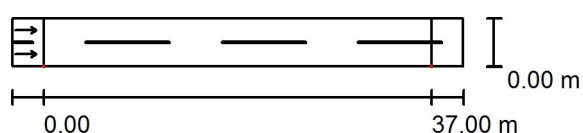
Parka iela / Planning data

Street Profile

Roadway 1 (Width: 4.500 m, Number of lanes: 2, tarmac: R3, q0: 0.070)

Maintenance factor: 0.85

Luminaire Arrangements



Luminaire: SIA Elnitor RoadSpark SLIM 80W
Luminous flux (Luminaire): 8081 lm
Luminous flux (Lamps): 9200 lm
Luminaire Wattage: 80.0 W
Arrangement: Single row, bottom
Pole Distance: 37.000 m
Mounting Height (1): 8.000 m
Height: 8.000 m
Overhang (2): 0.000 m
Boom Angle (3): 0.0 °
Boom Length (4): 1.500 m

Maximum luminous intensities

at 70°: 492 cd/klm
at 80°: 103 cd/klm
at 90°: 13 cd/klm

Any direction forming the specified angle from the downward vertical, with the luminaire installed for use.

No luminous intensities above 90°.

Arrangement complies with luminous intensity class G2.

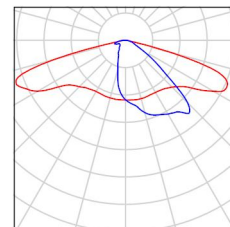
Arrangement complies with glare index class D.4.

Operator
Telephone
Fax
e-Mail

Parka iela / Luminaire parts list

SIA Elnitor RoadSpark SLIM 80W
Article No.:
Luminous flux (Luminaire): 8081 lm
Luminous flux (Lamps): 9200 lm
Luminaire Wattage: 80.0 W
Luminaire classification according to CIE: 100
CIE flux code: 35 68 94 100 88
Fitting: 1 x Cree XP-G (Correction Factor 0.500).

See our luminaire
catalog for an image of
the luminaire.



Operator
Telephone
Fax
e-Mail

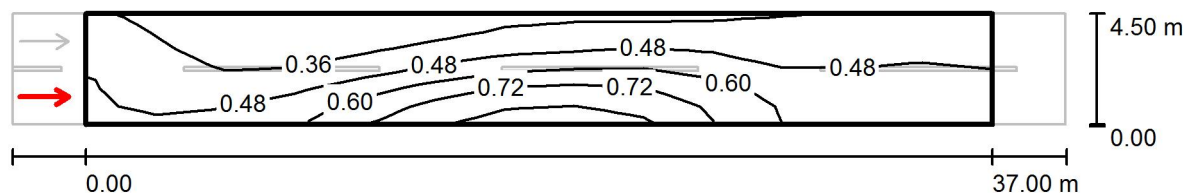
Parka iela / False Colour Rendering



0 20 30 40 50 70 90 120 300 lx

Operator
Telephone
Fax
e-Mail

Parka iela / Valuation Field Roadway 1 / Observer 1 / Isolines (L)



Values in Candela/m², Scale 1 : 308

Grid: 13 x 6 Points

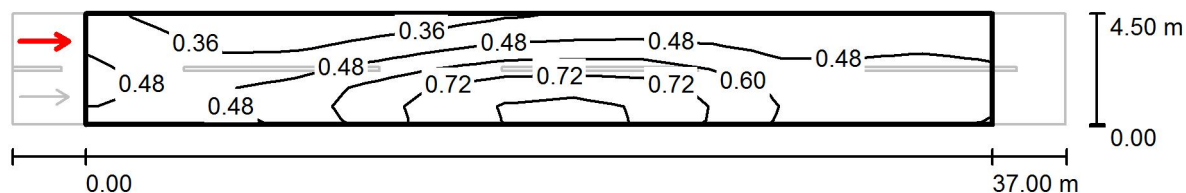
Observer Position: (-60.000 m, 1.125 m, 1.500 m)

tarmac: R3, q0: 0.070

	L_{av} [cd/m ²]	U0	UI	TI [%]
Calculated values:	0.49	0.52	0.55	12
Required values according to class ME6:	≥ 0.30	≥ 0.35	≥ 0.40	≤ 15
Fulfilled/Not fulfilled:	✓	✓	✓	✓

Operator
Telephone
Fax
e-Mail

Parka iela / Valuation Field Roadway 1 / Observer 2 / Isolines (L)



Values in Candela/m², Scale 1 : 308

Grid: 13 x 6 Points

Observer Position: (-60.000 m, 3.375 m, 1.500 m)

tarmac: R3, q0: 0.070

	L_{av} [cd/m ²]	U0	UI	TI [%]
Calculated values:	0.52	0.54	0.61	10
Required values according to class ME6:	≥ 0.30	≥ 0.35	≥ 0.40	≤ 15
Fulfilled/Not fulfilled:	✓	✓	✓	✓

Operator
Telephone
Fax
e-Mail

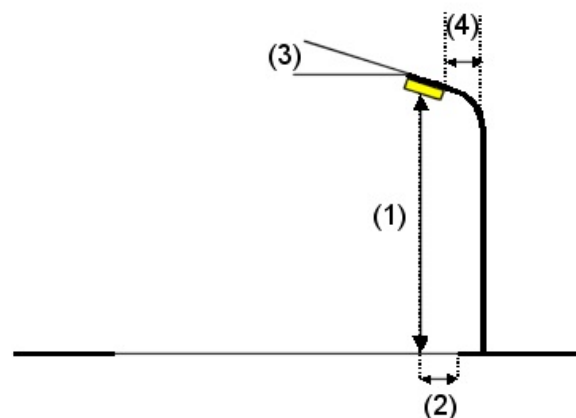
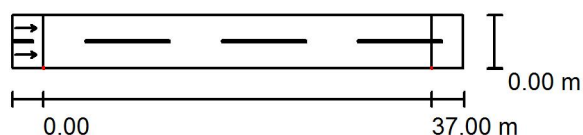
Jaunā iela / Planning data

Street Profile

Roadway 1 (Width: 5.000 m, Number of lanes: 2, tarmac: R3, q0: 0.070)

Maintenance factor: 0.85

Luminaire Arrangements



Luminaire:	RoadSpark SLIM 60W
Luminous flux (Luminaire):	6072 lm
Luminous flux (Lamps):	7440 lm
Luminaire Wattage:	60.0 W
Arrangement:	Single row, bottom
Pole Distance:	37.000 m
Mounting Height (1):	8.000 m
Height:	8.000 m
Overhang (2):	0.000 m
Boom Angle (3):	0.0 °
Boom Length (4):	1.500 m

Maximum luminous intensities

at 70°:	457 cd/klm
at 80°:	96 cd/klm
at 90°:	12 cd/klm

Any direction forming the specified angle from the downward vertical, with the luminaire installed for use.

No luminous intensities above 90°.

Arrangement complies with luminous intensity class G3.

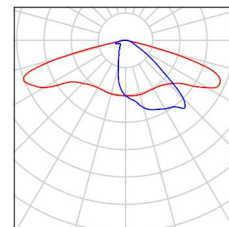
Arrangement complies with glare index class D.4.

Operator
Telephone
Fax
e-Mail

Jaunā iela / Luminaire parts list

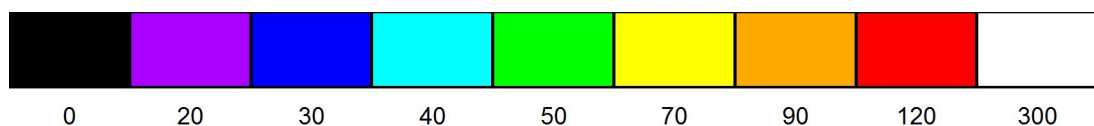
RoadSpark SLIM 60W
Article No.:
Luminous flux (Luminaire): 6072 lm
Luminous flux (Lamps): 7440 lm
Luminaire Wattage: 60.0 W
Luminaire classification according to CIE: 100
CIE flux code: 35 68 94 100 82
Fitting: 1 x Cree XP-G (Correction Factor 0.500).

See our luminaire
catalog for an image of
the luminaire.



Operator
Telephone
Fax
e-Mail

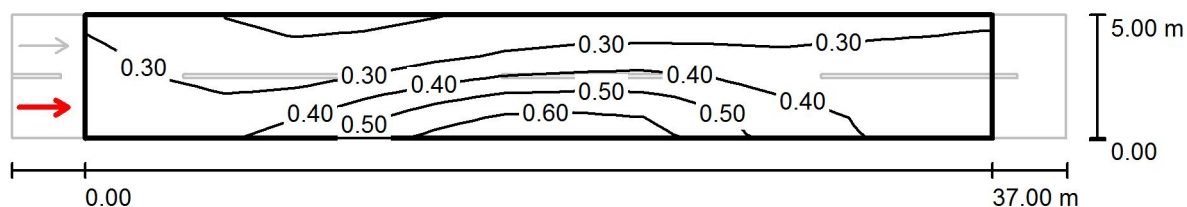
Jaunā iela / False Colour Rendering



lx

Operator
Telephone
Fax
e-Mail

Jaunā iela / Valuation Field Roadway 1 / Observer 1 / Isolines (L)



Values in Candela/m², Scale 1 : 308

Grid: 13 x 6 Points

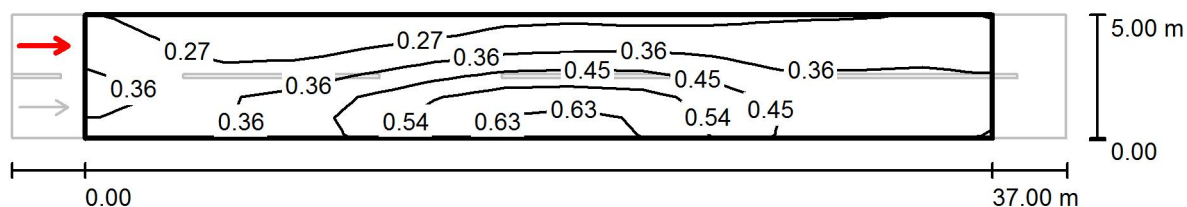
Observer Position: (-60.000 m, 1.250 m, 1.500 m)

tarmac: R3, q0: 0.070

	L_{av} [cd/m²]	U0	UI	TI [%]
Calculated values:	0.36	0.52	0.56	11
Required values according to class ME6:	≥ 0.30	≥ 0.35	≥ 0.40	≤ 15
Fulfilled/Not fulfilled:	✓	✓	✓	✓

Operator
Telephone
Fax
e-Mail

Jaunā iela / Valuation Field Roadway 1 / Observer 2 / Isolines (L)



Values in Candela/m², Scale 1 : 308

Grid: 13 x 6 Points

Observer Position: (-60.000 m, 3.750 m, 1.500 m)

tarmac: R3, q0: 0.070

	L_{av} [cd/m ²]	U0	UI	TI [%]
Calculated values:	0.38	0.53	0.64	9
Required values according to class ME6:	≥ 0.30	≥ 0.35	≥ 0.40	≤ 15
Fulfilled/Not fulfilled:	✓	✓	✓	✓

Operator
Telephone
Fax
e-Mail

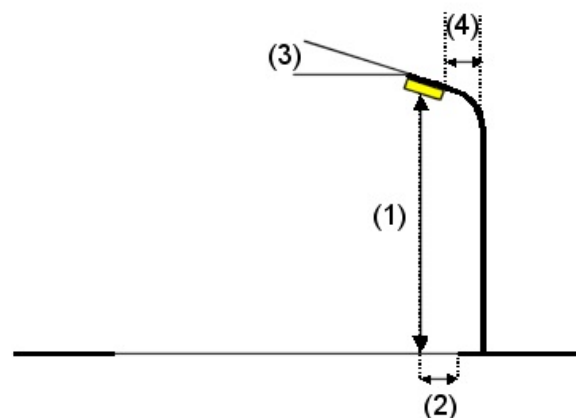
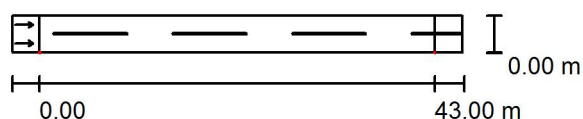
Miera iela / Planning data

Street Profile

Roadway 1 (Width: 4.000 m, Number of lanes: 2, tarmac: R3, q0: 0.070)

Maintenance factor: 0.85

Luminaire Arrangements



Luminaire:	RoadSpark SLIM 60W
Luminous flux (Luminaire):	6072 lm
Luminous flux (Lamps):	7440 lm
Luminaire Wattage:	60.0 W
Arrangement:	Single row, bottom
Pole Distance:	43.000 m
Mounting Height (1):	8.500 m
Height:	8.500 m
Overhang (2):	0.000 m
Boom Angle (3):	0.0 °
Boom Length (4):	1.500 m

Maximum luminous intensities

at 70°:	457 cd/klm
at 80°:	96 cd/klm
at 90°:	12 cd/klm

Any direction forming the specified angle from the downward vertical, with the luminaire installed for use.

No luminous intensities above 90°.

Arrangement complies with luminous intensity class G3.

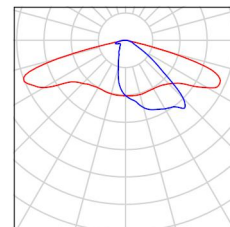
Arrangement complies with glare index class D.4.

Operator
Telephone
Fax
e-Mail

Miera iela / Luminaire parts list

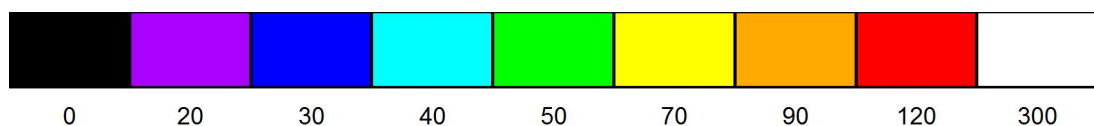
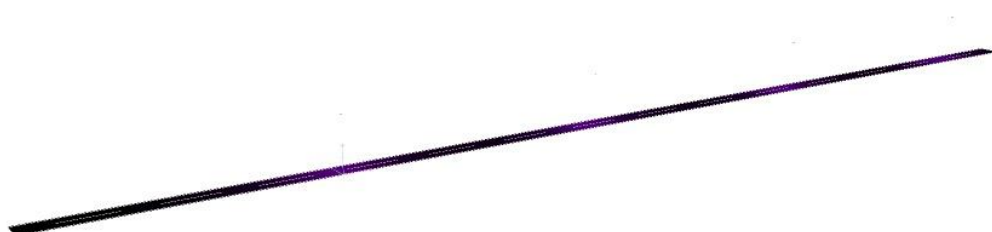
RoadSpark SLIM 60W
Article No.:
Luminous flux (Luminaire): 6072 lm
Luminous flux (Lamps): 7440 lm
Luminaire Wattage: 60.0 W
Luminaire classification according to CIE: 100
CIE flux code: 35 68 94 100 82
Fitting: 1 x Cree XP-G (Correction Factor 0.500).

See our luminaire
catalog for an image of
the luminaire.



Operator
Telephone
Fax
e-Mail

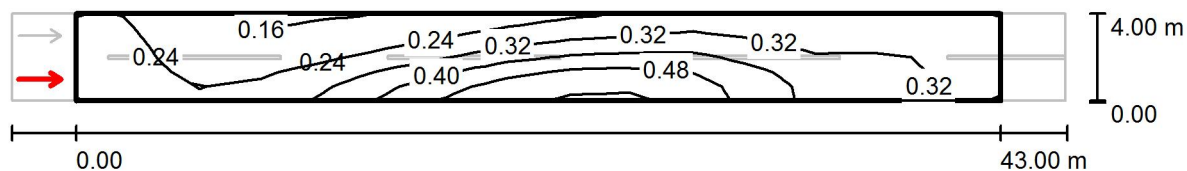
Miera iela / False Colour Rendering



lx

Operator
Telephone
Fax
e-Mail

Miera iela / Valuation Field Roadway 1 / Observer 1 / Isolines (L)



Values in Candela/m², Scale 1 : 351

Grid: 15 x 6 Points

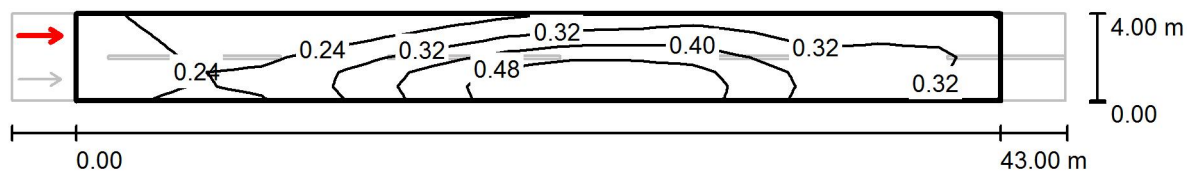
Observer Position: (-60.000 m, 1.000 m, 1.500 m)

tarmac: R3, q0: 0.070

	L_{av} [cd/m²]	U0	UI	TI [%]
Calculated values:	0.32	0.49	0.42	11
Required values according to class ME6:	≥ 0.30	≥ 0.35	≥ 0.40	≤ 15
Fulfilled/Not fulfilled:	✓	✓	✓	✓

Operator
Telephone
Fax
e-Mail

Miera iela / Valuation Field Roadway 1 / Observer 2 / Isolines (L)



Values in Candela/m², Scale 1 : 351

Grid: 15 x 6 Points

Observer Position: (-60.000 m, 3.000 m, 1.500 m)

tarmac: R3, q0: 0.070

	L_{av} [cd/m²]	U0	UI	TI [%]
Calculated values:	0.33	0.49	0.48	9
Required values according to class ME6:	≥ 0.30	≥ 0.35	≥ 0.40	≤ 15
Fulfilled/Not fulfilled:	✓	✓	✓	✓

Operator
Telephone
Fax
e-Mail

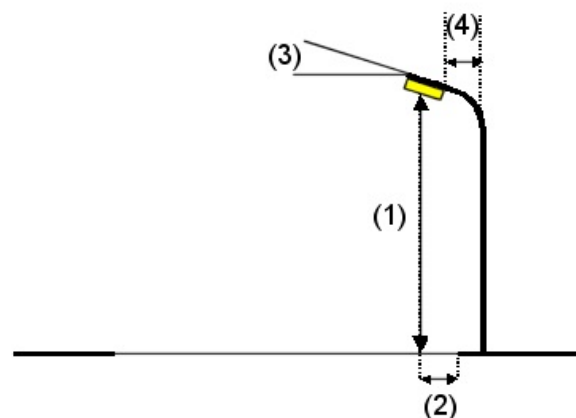
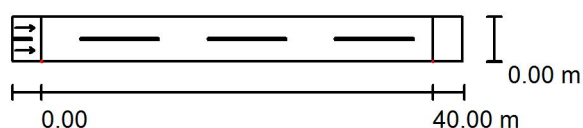
Dārza iela / Planning data

Street Profile

Roadway 1 (Width: 4.500 m, Number of lanes: 2, tarmac: R3, q0: 0.070)

Maintenance factor: 0.85

Luminaire Arrangements



Luminaire: SIA Elnitor RoadSpark SLIM 80W

Luminous flux (Luminaire): 8081 lm

Luminous flux (Lamps): 9200 lm

Luminaire Wattage: 80.0 W

Arrangement: Single row, bottom

Pole Distance: 40.000 m

Mounting Height (1): 8.000 m

Height: 8.000 m

Overhang (2): 0.000 m

Boom Angle (3): 0.0 °

Boom Length (4): 1.500 m

Maximum luminous intensities

at 70°: 492 cd/klm

at 80°: 103 cd/klm

at 90°: 13 cd/klm

Any direction forming the specified angle from the downward vertical, with the luminaire installed for use.

No luminous intensities above 90°.

Arrangement complies with luminous intensity class G2.

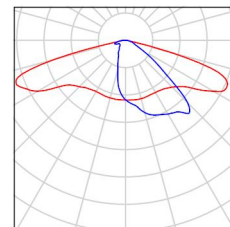
Arrangement complies with glare index class D.4.

Operator
Telephone
Fax
e-Mail

Dārza iela / Luminaire parts list

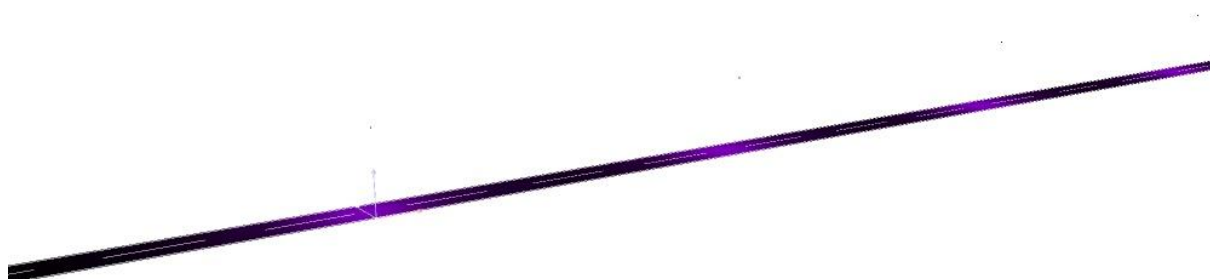
SIA Elnitor RoadSpark SLIM 80W
Article No.:
Luminous flux (Luminaire): 8081 lm
Luminous flux (Lamps): 9200 lm
Luminaire Wattage: 80.0 W
Luminaire classification according to CIE: 100
CIE flux code: 35 68 94 100 88
Fitting: 1 x Cree XP-G (Correction Factor 0.500).

See our luminaire
catalog for an image of
the luminaire.



Operator
Telephone
Fax
e-Mail

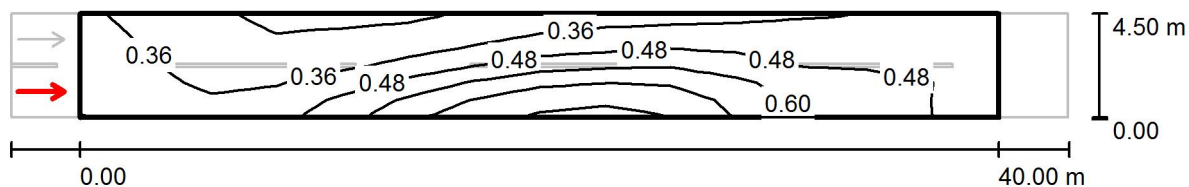
Dārza iela / False Colour Rendering



0 20 30 40 50 70 90 120 300 lx

Operator
Telephone
Fax
e-Mail

Dārza iela / Valuation Field Roadway 1 / Observer 1 / Isolines (L)



Values in Candela/m², Scale 1 : 329

Grid: 14 x 6 Points

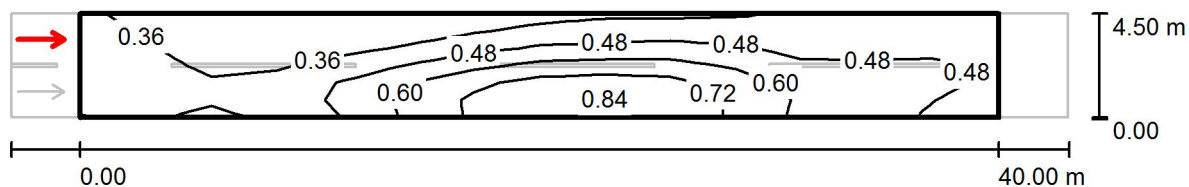
Observer Position: (-60.000 m, 1.125 m, 1.500 m)

tarmac: R3, q0: 0.070

	L_{av} [cd/m ²]	U0	UI	TI [%]
Calculated values:	0.46	0.49	0.45	12
Required values according to class ME6:	≥ 0.30	≥ 0.35	≥ 0.40	≤ 15
Fulfilled/Not fulfilled:	✓	✓	✓	✓

Operator
Telephone
Fax
e-Mail

Dārza iela / Valuation Field Roadway 1 / Observer 2 / Isolines (L)



Values in Candela/m², Scale 1 : 329

Grid: 14 x 6 Points

Observer Position: (-60.000 m, 3.375 m, 1.500 m)

tarmac: R3, q0: 0.070

	L_{av} [cd/m ²]	U0	UI	TI [%]
Calculated values:	0.48	0.50	0.52	10
Required values according to class ME6:	≥ 0.30	≥ 0.35	≥ 0.40	≤ 15
Fulfilled/Not fulfilled:	✓	✓	✓	✓